

e sales@laminghope.com  
t 020 3617 1333

**L&H**residential  
laminghope.com sales & lettings



## Station Road, NW4

£1,495 pcm

- Period house conversion
- Newly decorated duplex flat
- Two double bedrooms
- Two bathrooms
- Separate kitchen + Large living room
- Utility room
- 0.3 miles from Hendon Central Underground train station
- 0.4 miles from Hendon Thameslink train station.
- Furnished/unfurnished
- Move in date 9/10/20



**L&H**residential  
sales & lettings



L&H Residential are proud to bring to the market this newly decorated and spacious duplex flat in a period house conversion located just 0.3 miles from Hendon Central Underground train station & 0.4 miles from Hendon Thameslink train station. The property comprises of two light and spacious double bedrooms (one en suite), new modern bathrooms, fully fitted kitchen with brand new dishwasher, large utility with washing machine and dryer and a large open plan living room. The property also benefits from an off street parking space & beautiful wooden floors throughout ,

Furnished/unfurnished  
Move in date 9/10/20  
An early viewing is advised



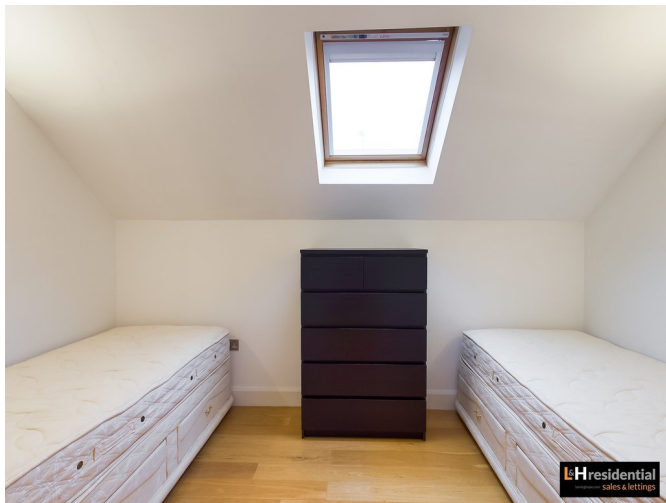
## Station Road, NW4

**£1,495 pcm**

A newly decorated and spacious duplex two double bedrooms two bathroom flat in a period house conversion located just 0.3 miles from Hendon Central Underground train station & 0.4 miles from Hendon Thameslink train station.







## Station Road, NW4

Approximate Gross Internal Area = 78.2 sq m / 842 sq ft



Illustration for identification purposes only, measurements are approximate, not to scale. floorplansUsketch.com © (ID693834)

### Laminghope

12 Shenley Road, Borehamwood, Hertfordshire, WD6 1DL

T: 020 3617 1333

E: enquiries@laminghope.com