

e sales@laminghope.com  
t 020 3617 1333

**L&H**residential  
laminghope.com sales & lettings



## Sunny Hill, London, NW4

**£875,000**

- Linked detached house
- Five bedrooms
- Two bathrooms
- Downstairs guest W.C
- Eat-In Kitchen
- Three reception rooms
- 0.8 miles from Hendon Central train station







L&H Residential are proud to bring to the market this wonderful opportunity to acquire this much loved & well cared for family home. five bedrooms, three reception rooms, two bathrooms. off street parking for two cars. Situated only moments away from the ample greenery of Sunny Hill Park, the house is also offered with no upper chain.

An early viewing is advised



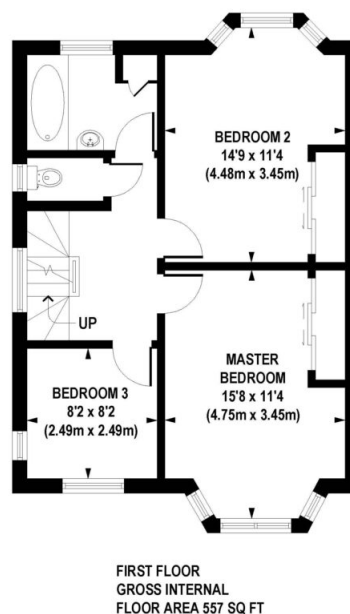
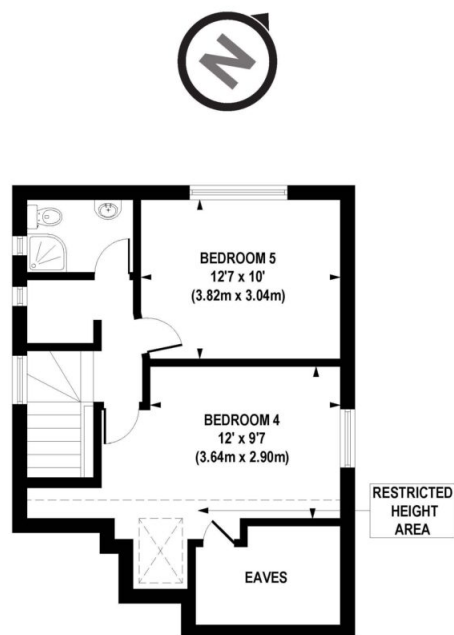
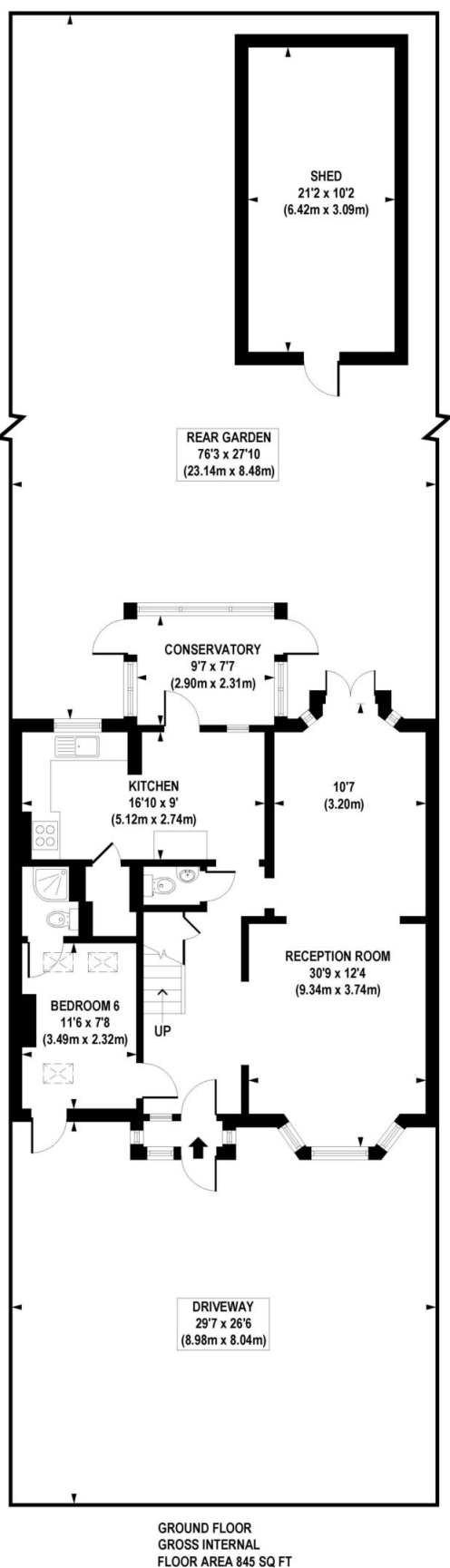
## Sunny Hill, London, NW4

**£875,000**

A well presented five bedroom detached house located just 0.8 miles from Hendon Central train station.







APPROX. GROSS INTERNAL FLOOR AREA 2092 sq. ft / 194.35 sq. m(Including Restricted Height Area, Eaves & Shed)  
APPROX. GROSS INTERNAL FLOOR AREA 1776 sq. ft / 164.99 sq. m(Excluding Restricted Height Area, Eaves & Shed)

Floorplan is for illustrative purposes only and is not to scale.  
Every attempt has been made to ensure the accuracy of the floorplan shown, however all measurements, fixtures, fittings and data shown are an approximate interpretation for illustrative purposes only.  
Liability for errors, omissions or mis-statement through negligence or otherwise is hereby excluded.

**Laminghope**

12 Shenley Road, Borehamwood, Hertfordshire, WD6 1DL

T: 020 3617 1333

E: [enquiries@laminghope.com](mailto:enquiries@laminghope.com)