

e sales@laminghope.com

t 020 3617 1333

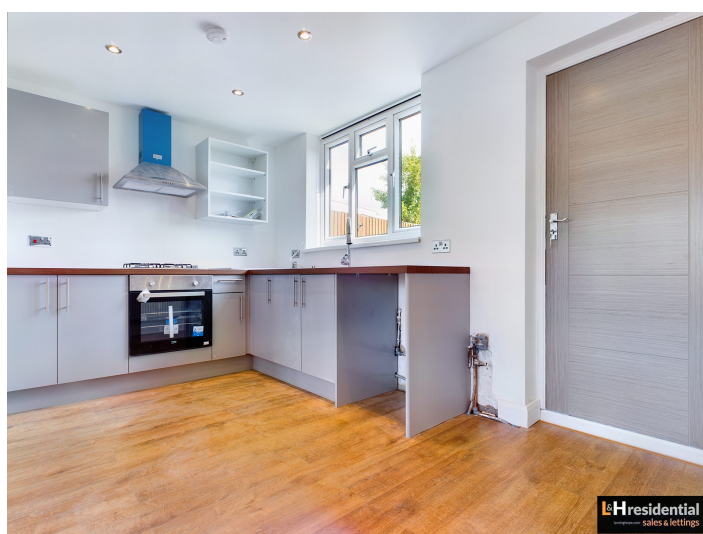
**L&H**residential  
laminghope.com sales & lettings



## Theobald Street, Borehamwood, WD6

£1,600 pcm

- Newly refurbished terraced house
- Three bedrooms
- Eat in kitchen
- Private garden
- 0.9 miles from Elstree & Borehamwood train station
- Unfurnished
- 15th September 2022





L&H Residential are proud to bring to the market this newly refurbished terraced house located just 0.9 miles from Elstree and Borehamwood train station and a short walk to local shops, schools, bus routes and places of worship. The accommodation comprises of three bedrooms, family bathroom, reception room and an eat in kitchen. The property also benefits from its own private garden and ample on street parking.

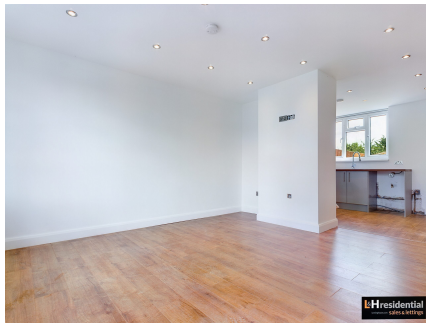
Available 15th September 2022  
Unfurnished

**Kitchen**

**Reception**

**Bedrooms**

**Bathroom**



## Theobald Street, Borehamwood, WD6

**£1,600 pcm**

A newly refurbished three bedroom terraced house located just 0.9 miles from Elstree and Borehamwood train station. Available 15/9/22





## Theobald Street, WD6

Approximate Gross Internal Area = 68.4 sq m / 738 sq ft

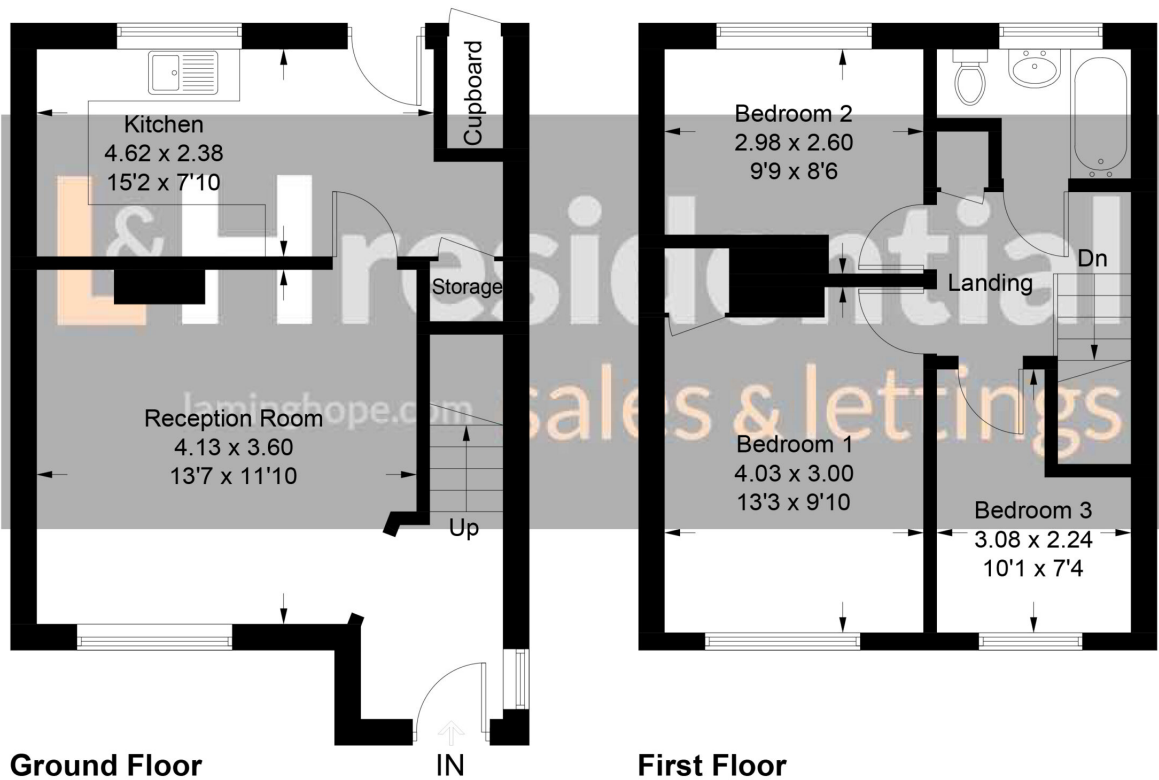


Illustration for identification purposes only, measurements are approximate, not to scale. floorplansUsketch.com © (ID782601)

### Laminghope

12 Shenley Road, Borehamwood, Hertfordshire, WD6 1DL

T: 020 3617 1333

E: enquiries@laminghope.com