

e sales@laminghope.com  
t 020 3617 1333

**L&H**residential  
laminghope.com sales & lettings



## Todd Close, Borehamwood, WD6

**£1,600 pcm**

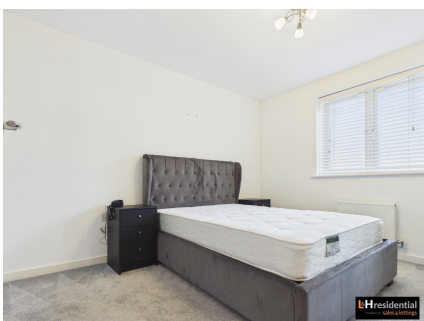
- Modern Apartment
- Two Bedrooms
- Two Bathrooms
- Allocated Parking
- Part Furnished
- Available Now
- Reposit Deposit Scheme Available
- 0.9 Miles from the Elstree & Borehamwood Station







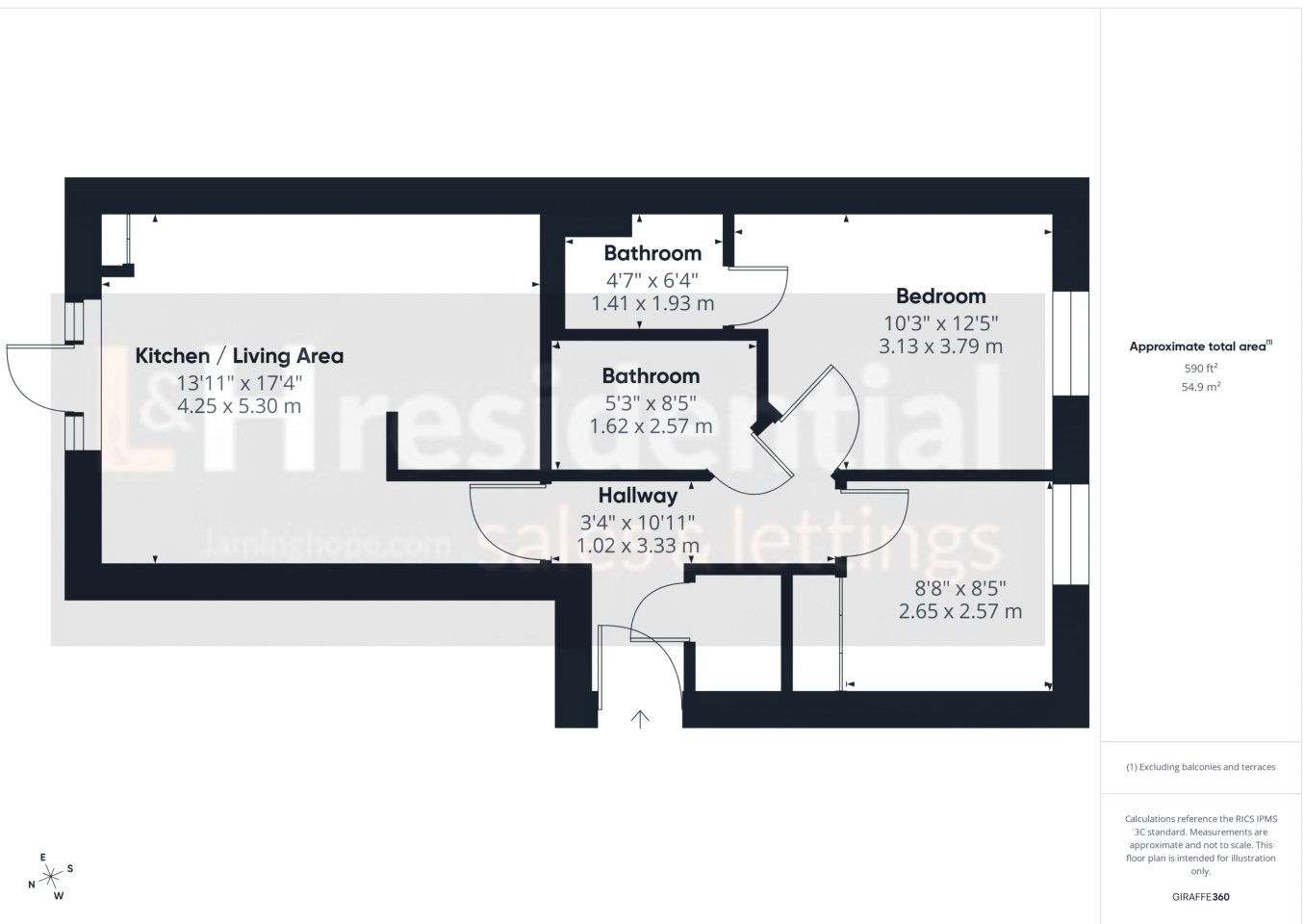
Presenting a beautifully appointed two-bedroom, two-bathroom modern apartment, ideally situated just 0.9 miles from Elstree & Borehamwood Station, offering excellent access for commuters and those seeking convenient transport links. This well-designed flat is part furnished, providing a stylish and comfortable environment with contemporary finishes throughout. The spacious open-plan living and dining area is perfect for both relaxing and entertaining, with large windows that fill the space with natural light and create a welcoming atmosphere. The sleek, fully fitted kitchen comes complete with integrated appliances and generous storage, catering to all your culinary needs. The principal bedroom benefits from a private en suite shower room, while the second double bedroom is serviced by a modern family bathroom, making this property ideal for sharers or small families. Both bedrooms feature neutral décor and ample wardrobe space, ensuring comfort and practicality. Additional features include allocated parking (offering peace of mind for residents with vehicles), gas central heating, and secure entry, providing both convenience and security. Available now, this attractive apartment offers flexible tenancy options and is eligible for the Reposit Deposit Scheme, giving tenants an alternative to the traditional deposit process. Located within easy reach of local shops, supermarkets, cafes, and amenities, as well as excellent schools and leisure facilities, this property is perfectly positioned for modern lifestyles. With its combination of contemporary living spaces, practical features, and prime location, this flat represents an outstanding opportunity for professionals, couples, or small families seeking a high-quality home in Borehamwood. Early viewing is highly recommended to appreciate the standard of accommodation on offer and to secure this desirable property.



# Todd Close, Borehamwood, WD6

£1,600 pcm

Modern 2-bed, 2-bath part-furnished flat near Elstree & Borehamwood Station. Open-plan living, en suite, parking, secure entry. Close to shops, schools, and transport. Available now.



## Laminghope

12 Shenley Road, Borehamwood, Hertfordshire, WD6 1DL

T: 020 3617 1333

E: enquiries@laminghope.com