

e sales@laminghope.com
t 020 3617 1333

L&Hresidential
laminghope.com sales & lettings



Woodcote Close, Bushey Heath, WD23

£989,950

- Stunning Detached Home
- Four bedrooms
- Three bathrooms
- Kitchen/diner
- Two Reception Rooms
- Private Cul-De-Sac
- Under Floor Heating
- Excellent School Catchment
- CHAIN FREE
- Off Street Parking for four cars





L&H Residential are proud to bring to the market this recently built four bedroom two reception room detached family home situated on a quiet Cul-de-sac in Bushey Heath. The property has a fully fitted bespoke kitchen, two further reception rooms and a downstairs cloakroom. To the first floor you have a three bedrooms one of which has an en-suite shower room and on the top floor you have a master bedroom and further en-suite. The property also benefits from off street parking for four cars, private garden and being sold CHAIN FREE.

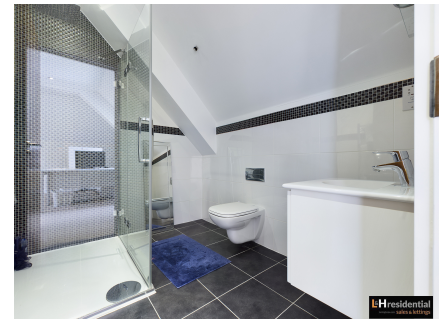
An early viewing is advised

Kitchen/diner

Receptions

Bedrooms

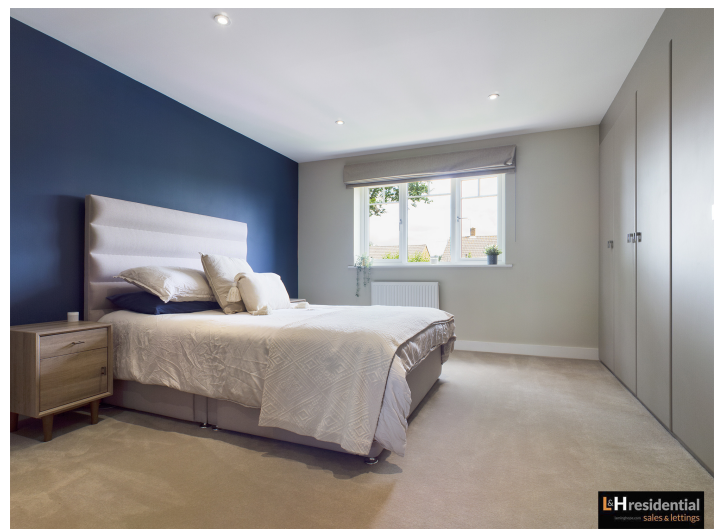
Bathrooms



Woodcote Close, Bushey Heath, WD23

£989,950

A modern and recently built (7 years ago) four bedroom detached family home with off street parking for four cars located in the heart of Bushey Heath.





Woodcote Close, WD23

Approximate Gross Internal Area
238.21 sq m / 2564 sq ft



Illustration for identification purposes only, measurements are approximate,
not to scale. floorplansUsketch.com © (ID 776233)

Laminghope

12 Shenley Road, Borehamwood, Hertfordshire, WD6 1DL

T: 020 3617 1333

E: enquiries@laminghope.com