

e sales@laminghope.com
t 020 3617 1333

L&Hresidential
laminghope.com sales & lettings



Woodside Park Road, London, N12

£1,800 pcm

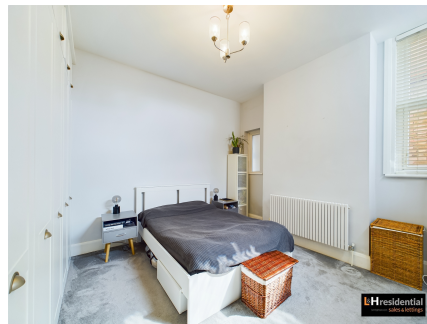
- Ground floor period conversion flat
- One bedroom
- Off street parking
- Direct access to private south facing garden
- Unfurnished
- Move in 12th September 2023
- Close to busy North Finchley shopping centre, all local buses, northern line tube station





L&H Residential are proud to bring to the market this stunning period ground floor conversion flat located close to busy North Finchley shopping centre, all local buses, northern line tube station. The accommodation comprises of a large double bedroom, bathroom with sperate W.C, lounge and kitchen. The property also benefits from off street parking for one car, direct access to a private south facing garden and outbuilding ideal for office use.

Unfurnished & Move in date 12th September 2023

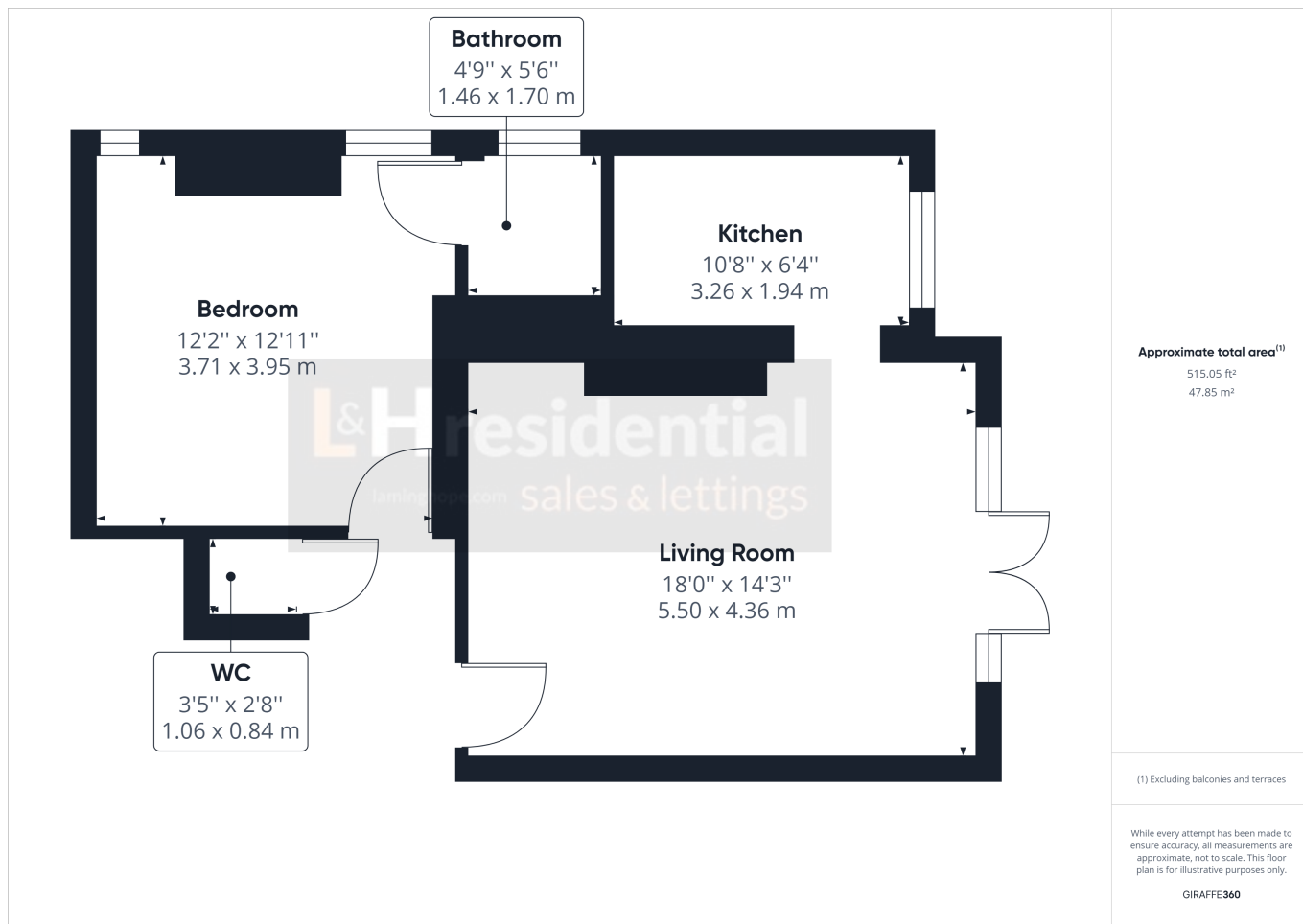


Woodside Park Road, London, N12

£1,800 pcm

A stunning one bedroom period conversion ground floor flat with own private south facing garden and off street parking.





Laminghope

12 Shenley Road, Borehamwood, Hertfordshire, WD6 1DL

T: 020 3617 1333

E: enquiries@laminghope.com