

e sales@laminghope.com
t 020 3617 1333

L&Hresidential
laminghope.com sales & lettings



Woodstock Road, London, NW11

£1,800 pcm

- Top floor flat
- Two bedrooms
- Two bathrooms
- Walking distance of Golders Green Tube Station
- Separate kitchen
- Part furnished
- Available November 2025

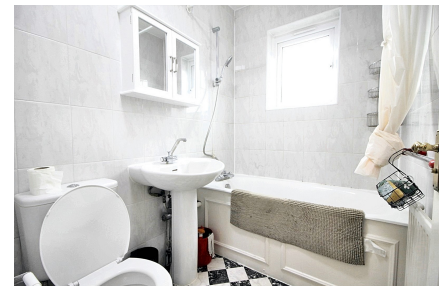




L&H Residential are proud to be presenting this delightful top-floor 2-bedroom flat conveniently located within walking distance of Golders Green Tube Station. Boasting two bathrooms, this property offers both comfort and convenience to its residents. The flat features a separate kitchen, providing a private space for culinary delights. Part furnished, this residence offers a blend of style and functionality.

Unlike many others, this property stands out with its two generously sized bedrooms, ideal for a small family or professionals seeking ample living space. The master bedroom offers a tranquil retreat, while the second bedroom provides flexibility for various living arrangements.

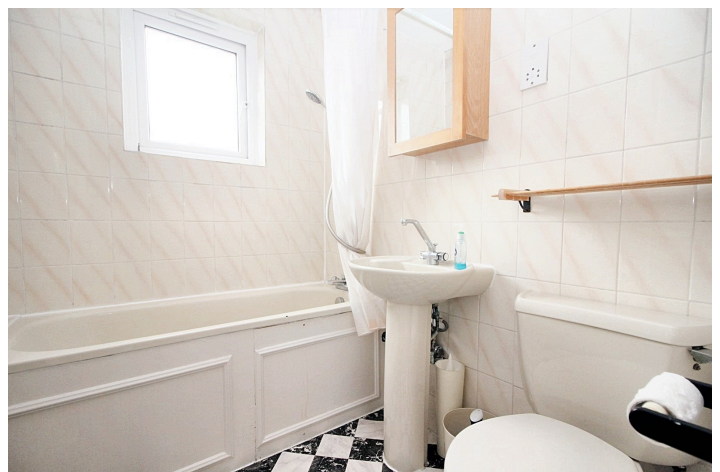
Available to occupy from November 2025, this residence presents an excellent opportunity to live in a sought-after area with access to transportation links, local amenities, and community activities. Don't miss the chance to make this delightful flat your new home sweet home.

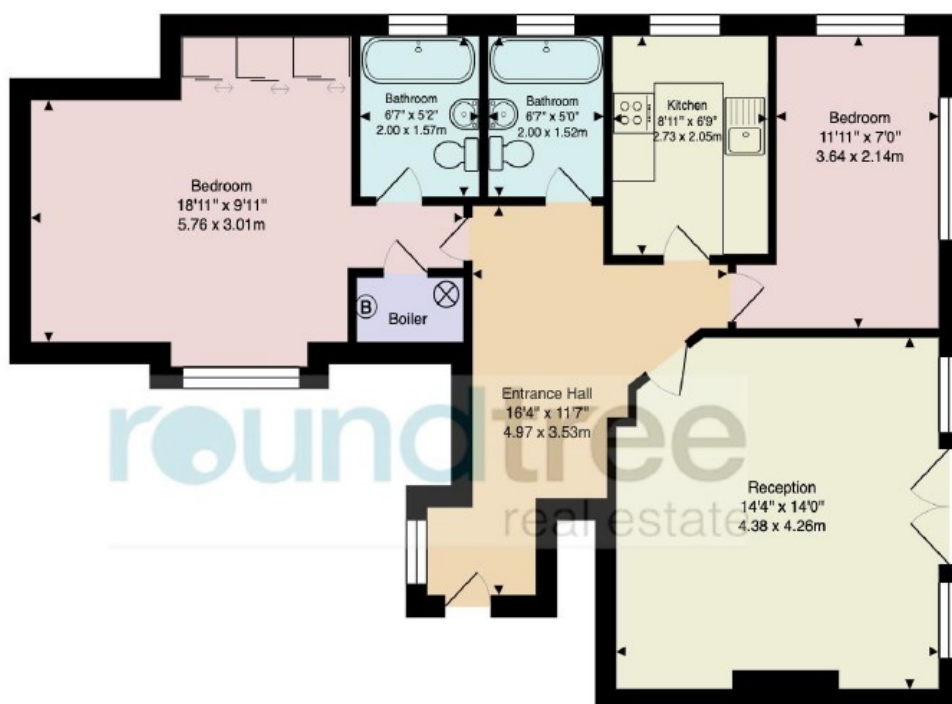


Woodstock Road, London, NW11

£1,800 pcm

Delightful top-floor 2-bed flat by Golders Green Tube. 2 baths, separate kitchen. Part furnished. Ideal for small families or professionals. Available from Nov 2025. Great location with transport links, amenities. Opportunity not to be missed!





Approx. Gross Internal Area: 737 ft² ... 68.5 m²

All measurements and areas are approximate only.
Dimensions are not to scale. This plan is for guidance
only and must not be relied upon as a statement of fact.
(c) Peninsula Surveys Ltd

Laminghope

12 Shenley Road, Borehamwood, Hertfordshire, WD6 1DL

T: 020 3617 1333

E: enquiries@laminghope.com