

e sales@laminghope.com

t 020 3617 1333

L&Hresidential
laminghope.com sales & lettings



Wordsworth Gardens, Borehamwood, WD6

£625,000

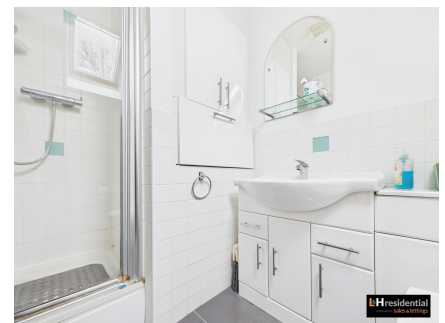
- Modern Terraced House
- Three Bedrooms
- Two Bathrooms & Downstairs Guest W.C.
- Kitchen/Diner
- Two Receptions
- Private Garden & Off Street Parking
- 0.4 Miles From Elstree & Borehamwood Train Station
- South Side Of Borehamwood





L&H Residential are proud to be presenting this fantastic property situated on the sought-after south side of Borehamwood, this modern terraced house boasts a generous and versatile layout ideal for contemporary family living. The property features three well-appointed bedrooms, two bathrooms, and a convenient downstairs guest W.C. The kitchen/diner provides a stylish space for both casual meals and formal dining, while two separate reception rooms offer ample space for relaxation and entertainment. Additionally, the property benefits from a private garden and off-street parking, ensuring comfort and convenience for residents.

Conveniently located just 0.4 miles from Elstree & Borehamwood Train Station, commuting is made easy for residents requiring access to London for work or leisure. With its well-connected position, residents can enjoy the perfect balance of suburban tranquillity and urban accessibility. This property presents a rare opportunity to acquire a contemporary home in a prime location within Borehamwood, offering a lifestyle of comfort and convenience for discerning buyers seeking a modern family residence.



Wordsworth Gardens, Borehamwood, WD6

£625,000

Stunning modern terraced house in sought-after Borehamwood location. 3 bedrooms, 2 bathrooms, private garden, off-street parking, close to train station. Ideal family living with contemporary design.





Laminghope

12 Shenley Road, Borehamwood, Hertfordshire, WD6 1DL

T: 020 3617 1333

E: enquiries@laminghope.com