

e sales@laminghope.com
t 020 3617 1333

L&Hresidential
laminghope.com sales & lettings



Wordsworth Gardens, WD6

£525,000

- Modern terraced house
- Three double bedrooms
- Two bathrooms
- Two receptions
- Kitchen/diner
- Off street parking for two cars
- Private garden with side access
- 0.4 miles from Elstree and Borehamwood Train Station
- Short walk to local shops and Yavneh College
- CHAIN FREE





L&H Residential are proud to bring to the market this modern terraced house located just 0.4 miles from Elstree and Borehamwood train station and a short walk to the local shops and Yavneh College. The accommodation comprises of; three double bedrooms, two bathrooms, Kitchen/diner, two receptions and a downstairs guest WC. The property boasts many great features as well as being excellently located it has other benefits such as; off street parking for two cars, private garden with side access, being sold chain free and a large green in middle of the development for the residents to use.

An early viewing is advised



Wordsworth Gardens, WD6

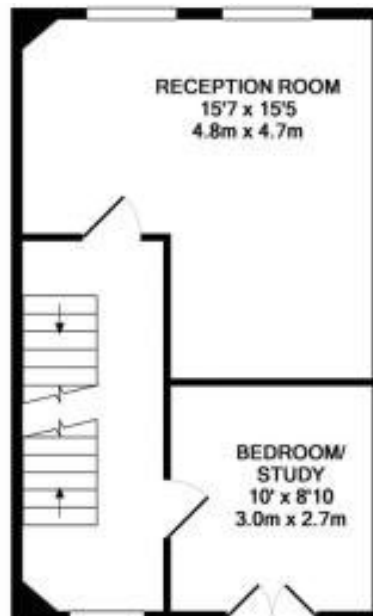
£525,000

A modern three double bedroom family home located just 0.4 miles from Elstree and Borehamwood train station and short walking distance to Yavneh College.

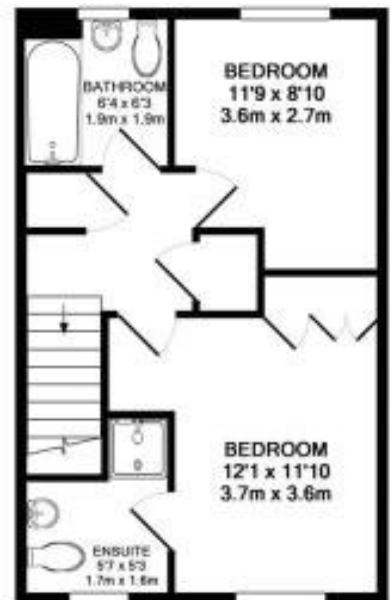




GROUND FLOOR
APPROX. FLOOR
AREA 34.1 SQ.M.
(367 SQ.FT.)



1ST FLOOR
APPROX. FLOOR
AREA 36.4 SQ.M.
(392 SQ.FT.)



2ND FLOOR
APPROX. FLOOR
AREA 35.3 SQ.M.
(380 SQ.FT.)

TOTAL APPROX. FLOOR AREA 105.8 SQ.M. (1139 SQ.FT.)

Whilst every attempt has been made to ensure the accuracy of the floor plan contained here, measurements of doors, windows, rooms and any other items are approximate and no responsibility is taken for any error, omission, or mis-statement. This plan is for illustrative purposes only and should be used as such by any prospective purchaser. The services, systems and appliances shown have not been tested and no guarantee as to their operability or efficiency can be given.

Made with Metropix ©2017

Laminghope

12 Shenley Road, Borehamwood, Hertfordshire, WD6 1DL

T: 020 3617 1333

E: enquiries@laminghope.com