

e sales@laminghope.com
t 020 3617 1333

L&Hresidential
laminghope.com sales & lettings



Wordsworth Gardens, WD6

£475,000

- Modern end of terrace house
- Three bedrooms
- Downstairs guest WC
- Separate kitchen + Two receptions
- Off street parking for two cars + Garage
- Southerly facing private garden with side access
- 0.4 miles from Elstree and Borehamwood Train Station
- Short walk to local shops and Yavneh College
- CHAIN FREE
- VIRTUAL VIEWINGS AVAILABLE





L&H Residential are proud to bring to the market this modern end of terrace house located just 0.4 miles from Elstree and Borehamwood train station and a short walk to the local shops and Yavneh College. The accommodation comprises of; three bedrooms, family bathroom, separate kitchen, two receptions and a downstairs guest WC. The property boasts many great features as well as being excellently located it has; off street parking for two cars, garage, private southerly facing garden with side access, being sold chain free and a large green in middle of the development for the residents to use.

An early viewing is advised

VIRTUAL VIEWINGS AVAILABLE



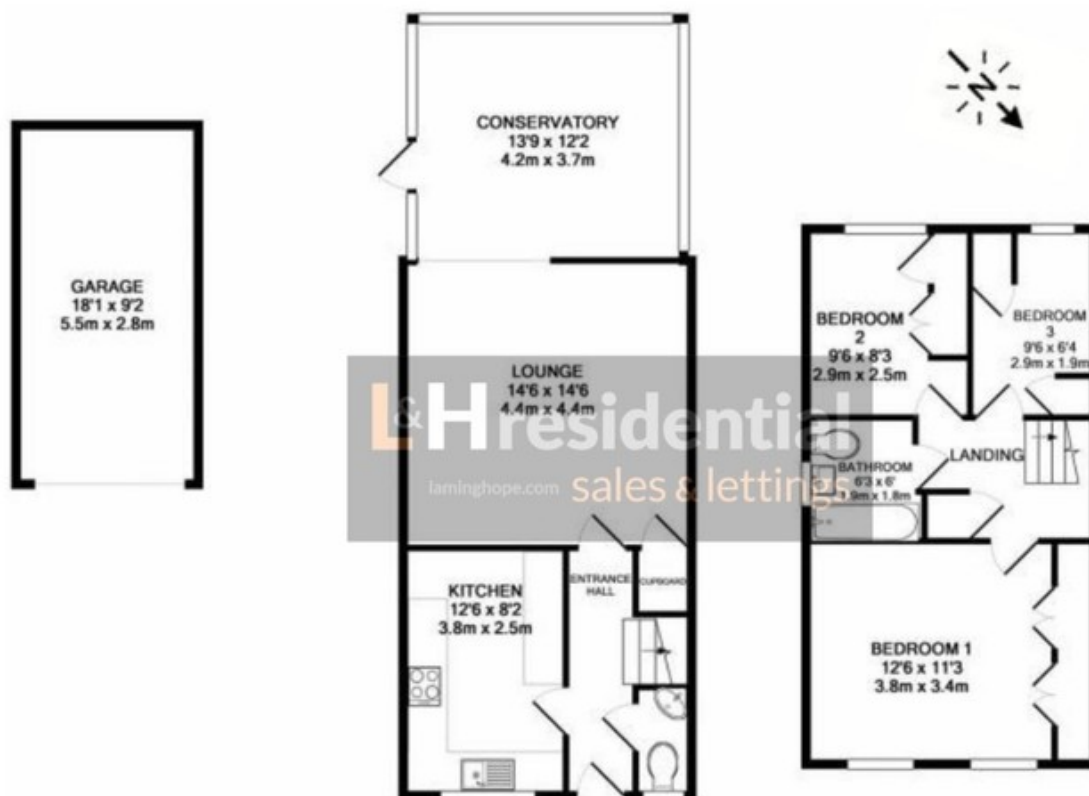
Wordsworth Gardens, WD6

£475,000

A modern three bedroom two reception end of terrace house located just 0.4 miles from Elstree and Borehamwood train station and short walking distance to Yavneh College.







GROUND FLOOR
APPROX. FLOOR
AREA 726 SQ.FT.
(67.5 SQ.M.)

1ST FLOOR
APPROX. FLOOR
AREA 393 SQ.FT.
(36.5 SQ.M.)

TOTAL APPROX. FLOOR AREA 1120 SQ.FT. (104.0 SQ.M.)

Whilst every attempt has been made to ensure the accuracy of the floor plan contained here, measurements of doors, windows, rooms and any other items are approximate and no responsibility is taken for any error, omission, or mis-statement. This plan is for illustrative purposes only and should be used as such by any prospective purchaser. The services, systems and appliances shown have not been tested and no guarantee as to their operability or efficiency can be given.

Made with Metropix ©2019

Laminghope

12 Shenley Road, Borehamwood, Hertfordshire, WD6 1DL

T: 020 3617 1333

E: enquiries@laminghope.com