



Horizon Place, Studio Way

Guide Price £335,000

L&Hresidential
laminghope.com sales & lettings



124 Horizon Place

Studio Way, Borehamwood

An ultra modern two bedroom two bathroom second floor flat located just one mile from Elstree and Borehamwood train station.

Tenure: Leasehold

- Recently built second floor flat
- Two double bedrooms
- Two bathrooms (one en suite)
- Modern open plan living
- Southerly facing balcony + Communal garden
- Allocated parking space
- One mile from Borehamwood and Elstree train station
- Lift
- CHAIN FREE



L&Hresidential
laminghope.com sales & lettings

Borehamwood - 0203 617 1333

Scott Magor

e scott@laminghope.com

t +44 7572 958 043



You can include any text here. The text can be modified upon generating your brochure.



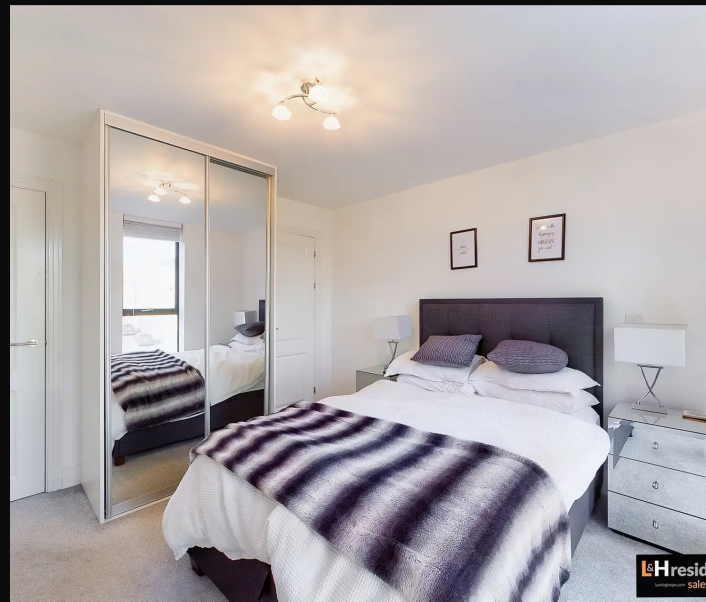
L&Hresidential
laminghope.com sales & lettings

Borehamwood - 0203 617 1333

Scott Magor

e scott@laminghope.com

t +44 7572 958 043



L&Hresider
Sales & Lettings

L&Hresider
Sales & Lettings

Horizon Place, Studio Way, WD6

Approximate Gross Internal Area
65.02 sq m / 699.89 sq ft



Illustration for identification purposes only, measurements are approximate, not to scale.
FloorplansUsketch.com © 2020 (ID 698026)

