



## Horizon Place, Studio Way

£600,000 Freehold

Modern end of terrace house built just five years ago • Three double bedrooms & Two Bathrooms (En Suite) • Kitchen/Diner Area & Separate Double aspect Lounge • Downstairs Toilet • Integral Garage (can be converted into accommodation) & Allocated parking • Beautifully Presented Thought & fitted Wardrobes • Private Garden • One mile from Elstree & Borehamwood Train Station • CHAIN FREE

**L&H**residential  
laminghope.com sales & lettings



L&H Residential are proud to present one of the larger houses situated in a sought-after residential area, this modern three-bedroom end of terrace house offers contemporary living spaces built just five years ago. The property boasts three double bedrooms, two bathrooms (one en suite), a kitchen/diner area, a separate double aspect lounge, and a convenient downstairs toilet. The well-appointed property includes fitted wardrobes, enhancing its practicality and charm.

With the potential to convert the integral garage into additional accommodation, this home also provides allocated parking for convenience. The private garden offers a tranquil outdoor retreat, perfect for relaxing or entertaining.

Located just one mile from Elstree & Borehamwood Train Station, this property enjoys easy access to transportation links, ideal for commuters. For those seeking a hassle-free purchase, this residence is offered chain-free, presenting a wonderful opportunity to acquire a contemporary home in a desirable location.

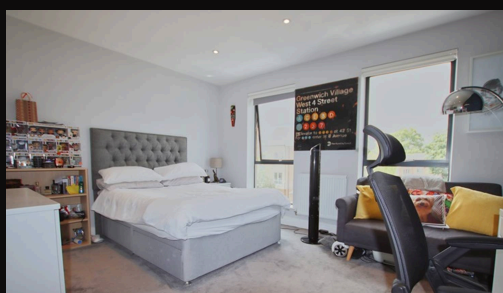


- Modern end of terrace house built just five years ago
- Three double bedrooms & Two Bathrooms (En Suite)
- Kitchen/Diner Area & Separate Double aspect Lounge
- Downstairs Toilet
- Integral Garage (can be converted into accommodation) & Allocated parking

020 3617 1333

[enquiries@laminghope.com](mailto:enquiries@laminghope.com)

**L&H residential**  
sales & lettings



GROUND FLOOR  
500 sq ft. (47.4 sq m.) approx.

1ST FLOOR  
442 sq ft. (41.1 sq m.) approx.

2ND FLOOR  
442 sq ft. (41.1 sq m.) approx.

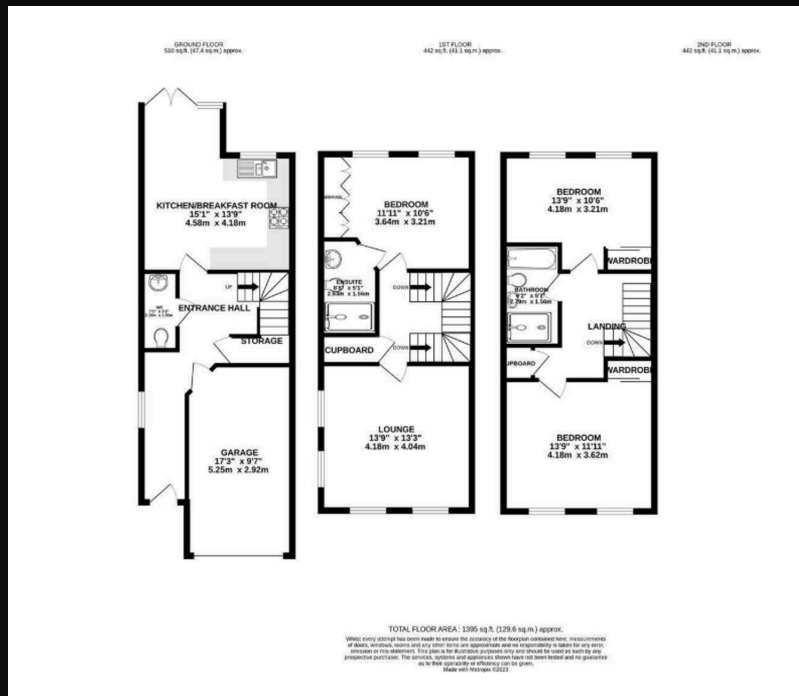


TOTAL FLOOR AREA: 1395 sq ft. (129.6 sq m.) approx.

Whilst every attempt has been made to ensure the accuracy of the floorplan contained herein, measurements of doors, windows, rooms and any other items are approximate and no responsibility is taken for any error, omission or mis-statement. This plan is for illustrative purposes only and should be used in conjunction with any prospective purchase. The services, systems and appliances shown have not been tested and no guarantee is given as to their operability or efficiency at the time.  
Made with Netopac 02021

You can include ar

**L&H** residential  
laminghope.com sales & lettings



You can include :

**L&H residential**  
 laminghope.com **sales & lettings**