



Brook Road, Borehamwood

£275,000 Leasehold



Impeccably presented two-bed flat in a well-maintained development. Generous living spaces, desirable location & local amenities make for a luxurious lifestyle. Modern kitchen, double aspect living room, ample storage & communal garden. Excellent transport links. Chain-free purchase. A must-see.

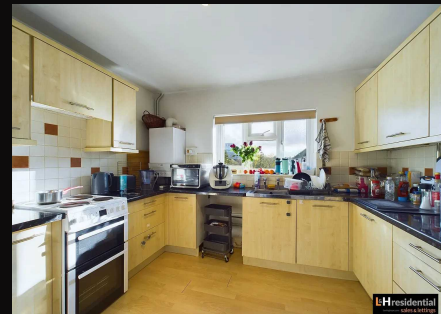
L&H residential
laminghope.com sales & lettings

020 3617 1333

enquiries@laminghope.com

L&H Residential are proud to introduce this impeccably presented two-bedroom flat, situated on the first floor of a well-maintained residential development. With its generous living spaces, desirable location, and array of local amenities just a short stroll away, this property offers a truly luxurious lifestyle.

Overall, this two-bedroom flat encapsulates the essence of refined living. With its desirable location, generous living spaces, and access to local amenities, it presents a unique opportunity to enjoy a truly effortless lifestyle. Perfect for professionals and families alike, this property is a must-see for anyone seeking space, convenience, and style. Arrange a viewing today and let this home exceed your expectations.

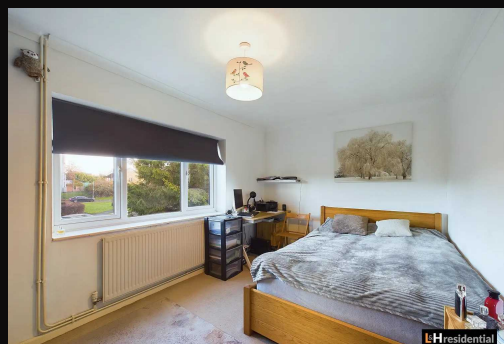


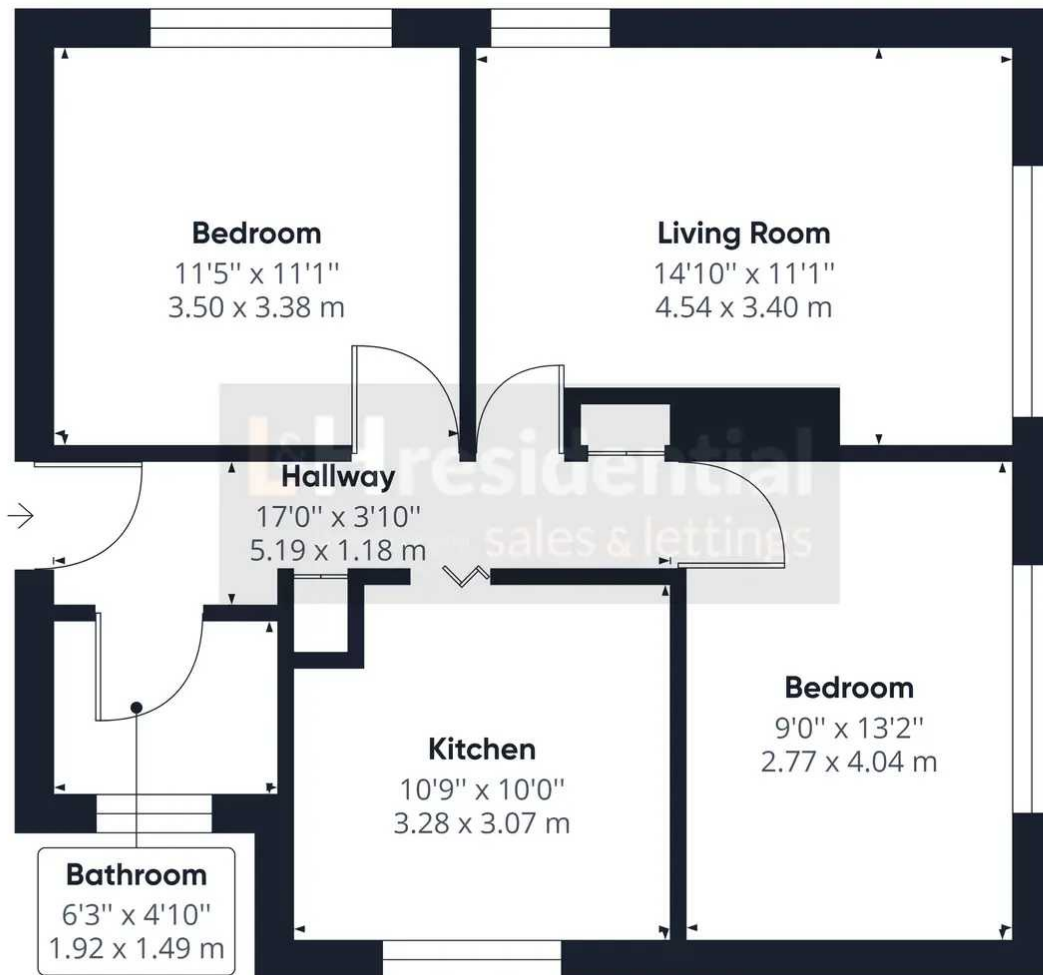
- First floor flat
- Two double bedrooms
- Separate kitchen
- Double aspect living room
- Storage room
- Short walk to local schools, shops and bus routes
- Communal garden
- CHAIN FREE
- 0.6 miles from Elstree & Borehamwood train station

Scott Magor

e scott@laminghope.com

t +44 7572 958 043





Approximate total area⁽¹⁾

616.91 ft²
57.31 m²

(1) Excluding balconies and terraces

While every attempt has been made to ensure accuracy, all measurements are approximate, not to scale. This floor plan is for illustrative purposes only.

GIRAFFE360