



Pinewood Close, Borehamwood

£389,950

L&Hresidential
laminghope.com sales & lettings

Pinewood Close

Borehamwood

A two bedroom end of terraced house with off street parking and a garage located in the sought after Studio Way development.

Tenure: Freehold

- Two bedroom end of terrace house
- Open plan living space
- Studio Way development
- Off street parking
- Private garden
- Short walk from local schools,shops and bus routes
- CHAIN FREE



L&Hresidential
laminghope.com sales & lettings

Borehamwood - 0203 617 1333

Scott Magor

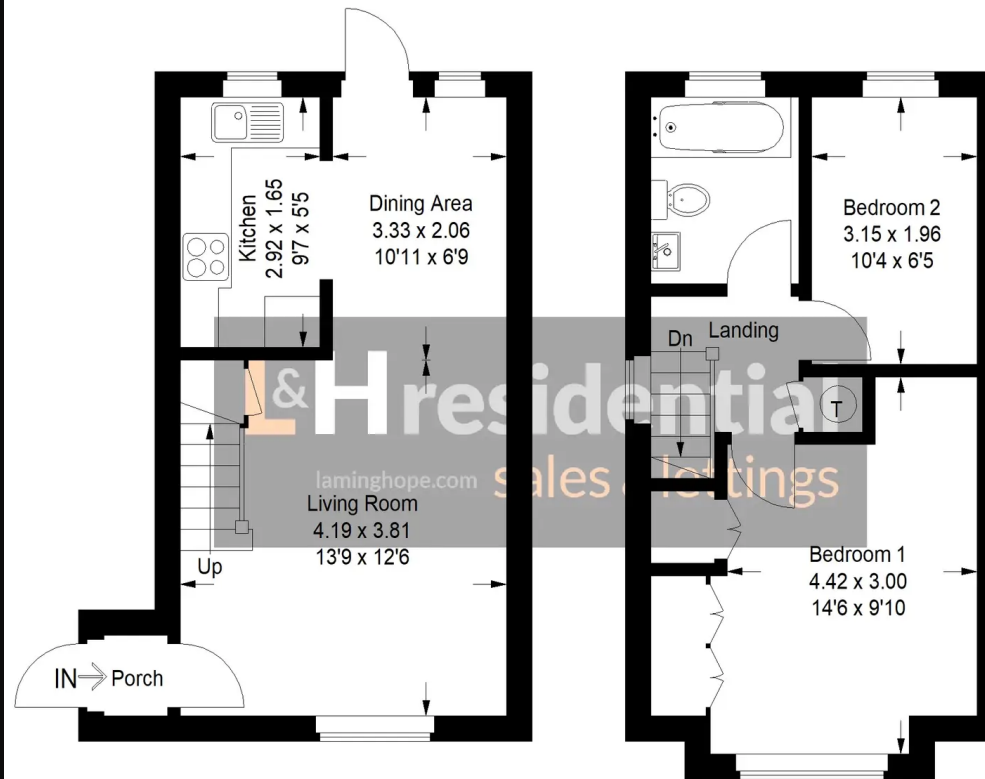
e scott@laminghope.com

t +44 7572 958 043



Pinewood Close, WD6

Approximate Gross Internal Area
58.4 sq m / 629 sq ft



Ground Floor

First Floor

Illustration for identification purposes only, measurements are approximate, not to scale.
FloorplansUsketch.com © 2022 (ID 876190)

WHERE TO FIND US

Borehamwood Branch:
12 Shenley Road,
Borehamwood,
Hertfordshire,
WD6 1DL

Telephone: 020 3617 1333
Email: enquiries@laminghope.com