



Wesley House Station Road, Borehamwood

£425,000 Leasehold



Stunning 2 bed ground floor flat, newly built. Offers contemporary living with spacious double bedrooms. Open plan kitchen/living area ideal for entertaining. Private terrace, own entrance & secure parking. Chain free, abundance of storage. Close to train station & local shops. View today!

L&Hresidential
laminghope.com sales & lettings

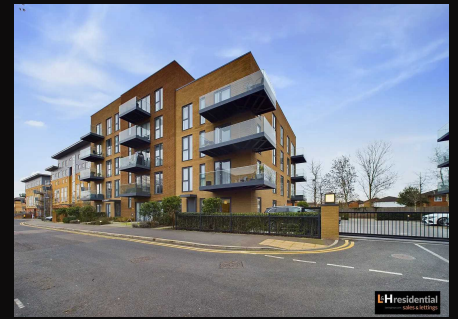
020 3617 1333

enquiries@laminghope.com

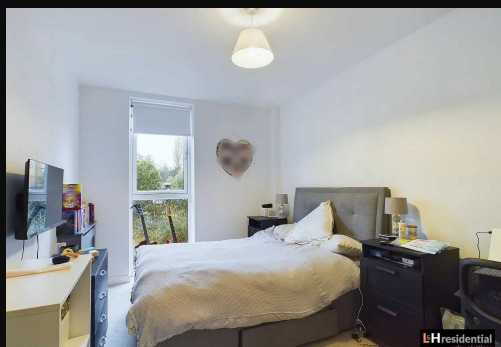
L&H Residential are proud to present this stunning 2 bedroom apartment, a recently built ground floor flat that offers contemporary living at its finest. Boasting a spacious and inviting atmosphere, this property presents two generously sized double bedrooms, perfect for relaxation and rejuvenation. The heart of the home features a large open plan kitchen/living area, providing an ideal space for entertaining guests or enjoying serene family moments.

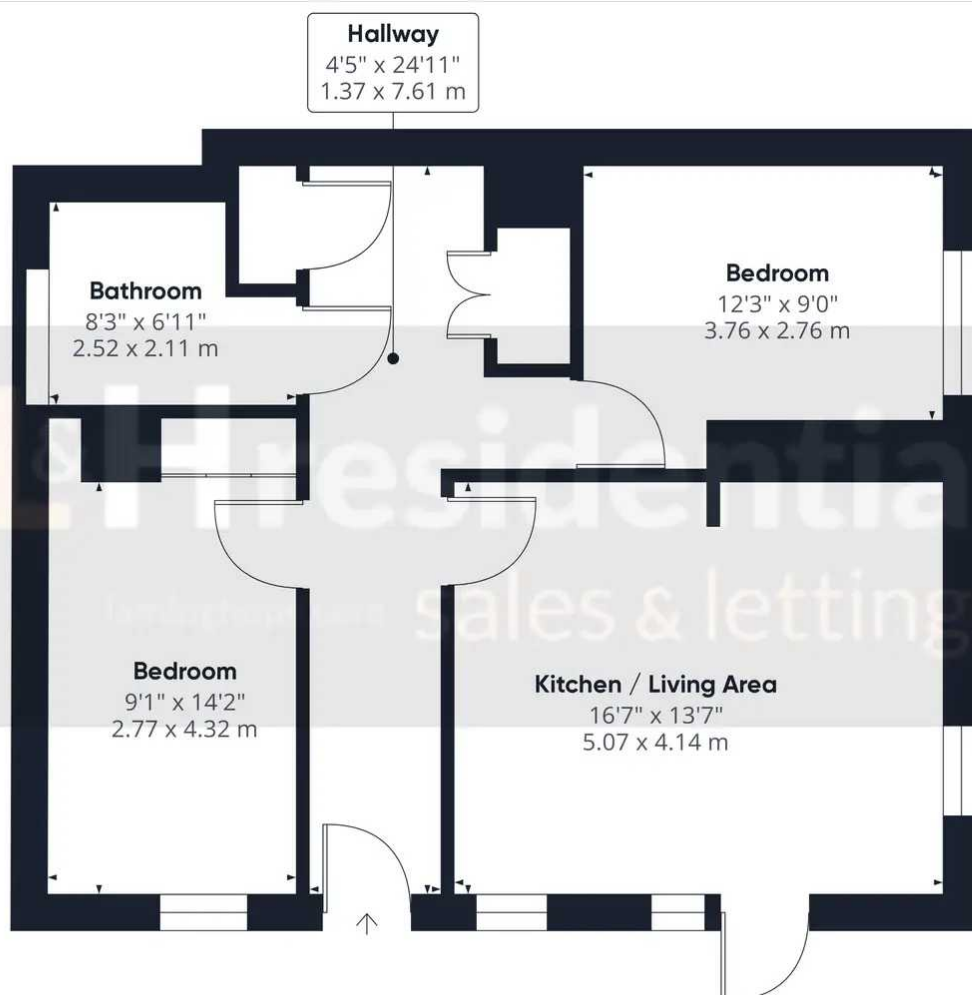
What sets this property apart is the direct access it grants to a private terrace, a hidden gem that adds a touch of sophistication to outdoor living. With its own private entrance, the property offers utmost privacy and convenience. A long lease ensures peace of mind, while an allocated parking space in the secure gated car park guarantees safe and hassle-free parking.

CHAIN FREE



- Recently built ground floor flat
- Two double bedrooms
- Large open plan kitchen/living area
- Direct access to private terrace
- Own private entrance
- Long lease
- Allocated parking space in gated car park
- **CHAIN FREE**
- Lots of storage
- Stones throw from Elstree & Borehamwood train station & local shops





Approximate total area^m
730.59 ft²
67.87 m²

Excluding balconies and terraces

While every attempt has been made to ensure accuracy, all measurements are approximate, not to scale. This floor plan is for illustrative purposes only.

GIRAFFE 360