

Dacre Gardens, Borehamwood

£449,950 Freehold

Mid terrace house • Three good sized bedrooms • Separate kitchen • Private garden • Potential to extend (stpp) • Potential to add driveway (stpp) • South side of Borehamwood • Short walk to local schools, shops and bus routes • CHAIN FREE

L&Hresidential
laminghope.com sales & lettings

L&H Residential are proud to present this family home located on the sought-after south side of Borehamwood, this three-bedroom mid-terraced house offers an excellent opportunity for those looking to settle down in a vibrant community. Boasting three generously sized bedrooms and a separate kitchen, this property provides ample living space for a growing family or professionals seeking room to work from home. The private garden offers a tranquil space for outdoor relaxation. For those looking to expand, the property presents the exciting potential to extend and add a driveway, subject to necessary planning permissions.

Situated just a short stroll away from local schools, shops, and bus routes, residents will benefit from convenient access to essential amenities and transport links. Additionally, the property is offered chain-free

L&Hresidential
laminghope.com sales & lettings

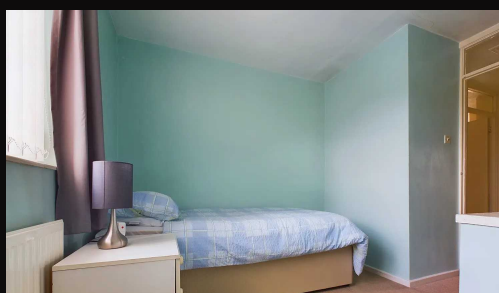


- Mid terrace house
- Three good sized bedrooms
- Separate kitchen
- Private garden
- Potential to extend (stpp)
- Potential to add driveway (stpp)
- South side of Borehamwood
- Short walk to local schools, shops and bus routes
- CHAIN FREE

Scott Magor

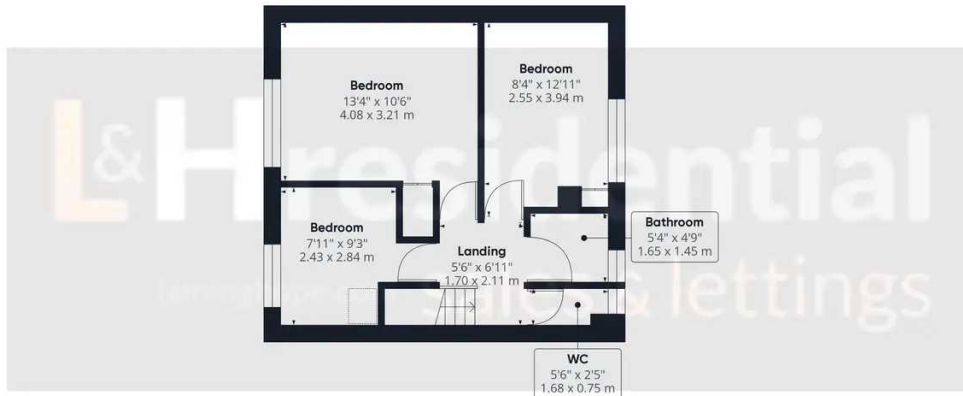
e scott@laminghope.com

t +44 7572 958 043





Ground Floor



Floor 1

Approximate total area⁽¹⁾
758.52 ft²
70.47 m²

(1) Excluding balconies and terraces

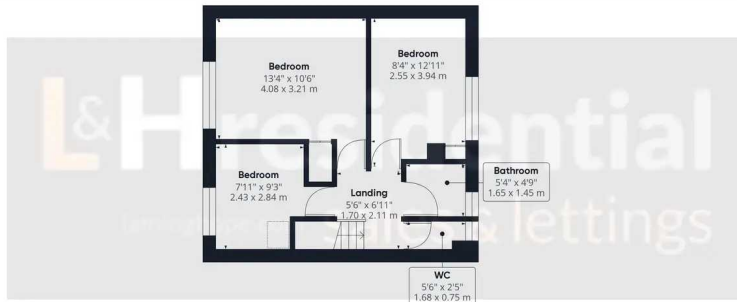
While every attempt has been made to ensure accuracy, all measurements are approximate, not to scale. This floor plan is for illustrative purposes only.

GIRAFFE360

You can include ar



Ground Floor



Floor 1

Approximate total area⁽¹⁾
758.52 ft²
70.47 m²

(1) Excluding balconies and terraces

While every attempt has been made to ensure accuracy, all measurements are approximate, not to scale. This floor plan is for illustrative purposes only.

GIRAFFE 360

You can include a