



Alconbury Close, Borehamwood

£599,950 Freehold

Extended end of terrace • Four bedroom • Two bathrooms • Kitchen/Diner • Through lounge • Downstairs guest w.c. • Off street parking for multiple cars • Under a mile from Elstree & Borehamwood train station • Garage • Short walk to local schools,

L&Hresidential
laminghope.com sales & lettings

L&H Residential are proud to present this impressive extended end of terrace property boasting four bedrooms, two bathrooms, and a generous kitchen/diner. The home features a through lounge offering ample space for relaxing and entertaining. A practical downstairs guest w.c. adds convenience to the living area. With off-street parking for multiple cars and a garage, this residence meets all your storage and parking needs.

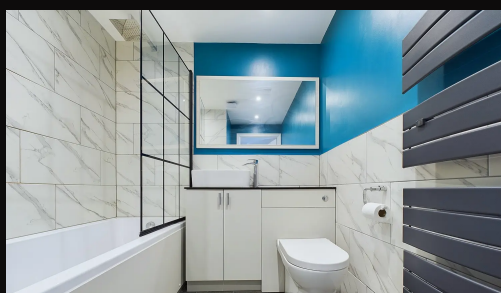
Situated under a mile from Elstree & Borehamwood train station, commuting is effortless and convenient. Additionally, the property is set in close proximity to local schools, shops, and bus routes, making every-day errands and outings a breeze.

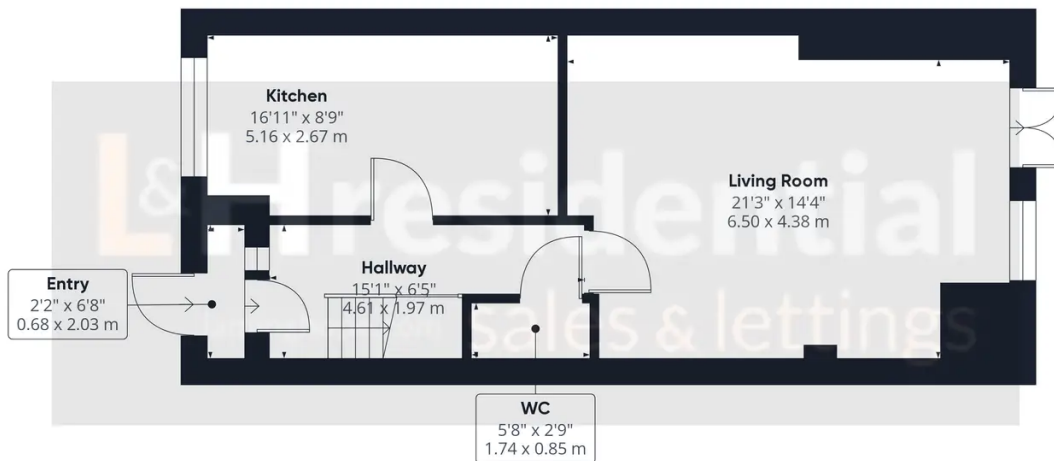
L&Hresidential
laminghope.com sales & lettings



- Extended end of terrace
- Four bedroom
- Two bathrooms
- Kitchen/Diner
- Through lounge
- Downstairs guest w.c.
- Off street parking for multiple cars
- Under a mile from Elstree & Borehamwood train station
- Garage
- Short walk to local schools, shops and bus routes

Scott Magor
e scott@laminghope.com
t +44 7572 958 043





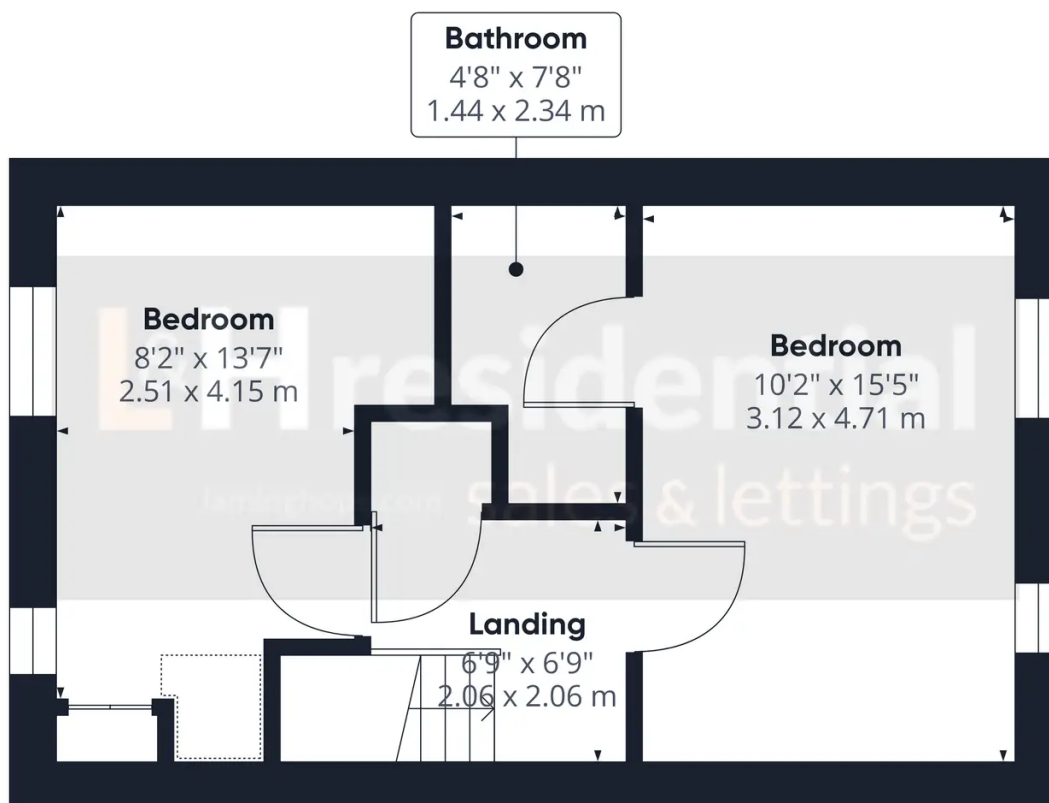
Approximate total area⁽¹⁾
564.71 ft²
52.46 m²

(1) Excluding balconies and terraces

While every attempt has been made to ensure accuracy, all measurements are approximate, not to scale. This floor plan is for illustrative purposes only.

GIRAFFE360

Ground Floor Building 1



Approximate total area⁽¹⁾
357.32 ft²
33.2 m²

(1) Excluding balconies and terraces

While every attempt has been made to ensure accuracy, all measurements are approximate, not to scale. This floor plan is for illustrative purposes only.

GIRAFFE360

Floor 2 Building 1

