



Stanborough Avenue, Borehamwood

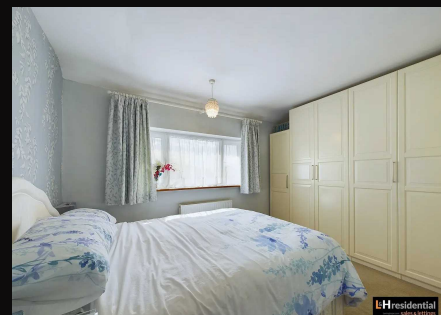
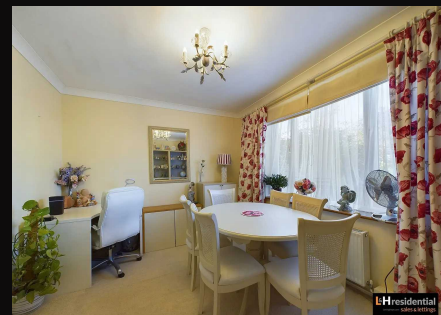
£550,000 Freehold

Extended semi detached house • Three double bedrooms • Three reception rooms • Downstairs guest W.C & Utility Room • Off street parking • Mature garden • Potential to extend (stpp) • Short walk to local shops, schools and bus routes • CHAIN FREE

L&Hresidential
laminghope.com sales & lettings

L&H Residential are proud to present a splendid opportunity to acquire this immaculately presented 3-bedroom semi-detached house, conveniently situated within a sought-after locale. Boasting an extended layout, this charming residence offers a blend of contemporary living spaces and desirable features. The interior encompasses three generously proportioned double bedrooms, perfectly complemented by three reception rooms, allowing for versatile functionality and ample space for entertainment or relaxation. Additionally, the property benefits from a convenient downstairs guest WC and utility room, catering to modern lifestyles. With the added convenience of off-street parking.

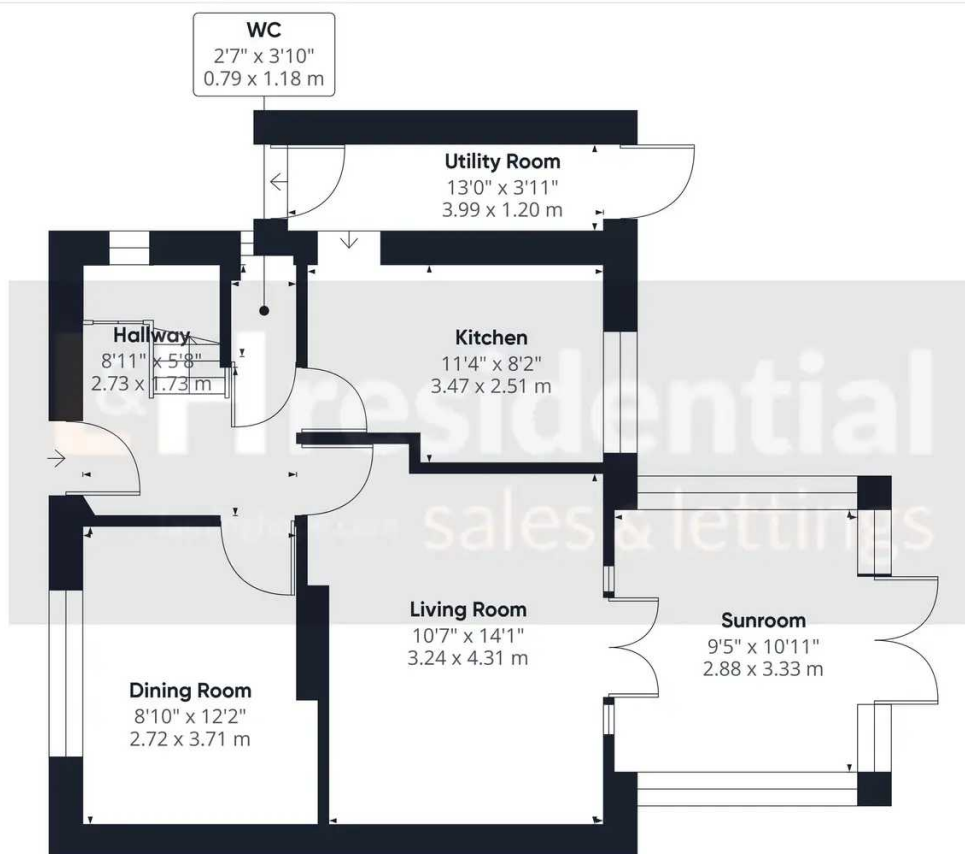
L&Hresidential
laminghope.com sales & lettings



- Extended semi detached house
- Three double bedrooms
- Three reception rooms
- Downstairs guest W.C & Utility Room
- Off street parking
- Mature garden
- Potential to extend (stpp)
- Short walk to local shops, schools and bus routes
- CHAIN FREE

Scott Magor
e scott@laminghope.com
t +44 7572 958 043





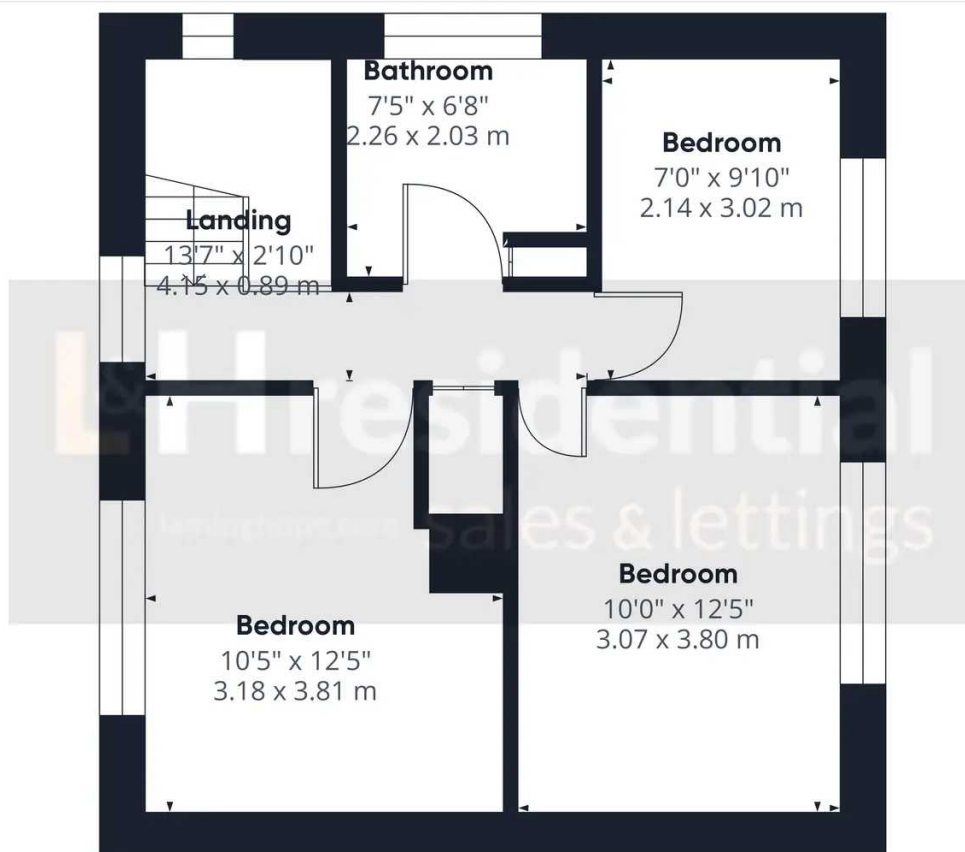
Ground Floor

Approximate total area⁽¹⁾
620.19 ft²
57.62 m²

(1) Excluding balconies and terraces

While every attempt has been made to ensure accuracy, all measurements are approximate, not to scale. This floor plan is for illustrative purposes only.

GIRAFFE360



Floor 1

Approximate total area⁽¹⁾
413.51 ft²
38.42 m²

(1) Excluding balconies and terraces

While every attempt has been made to ensure accuracy, all measurements are approximate, not to scale. This floor plan is for illustrative purposes only.

GIRAFFE360