



Tennison Avenue, Borehamwood

£599,950 Freehold

Detached bungalow • Two bedroom • Kitchen/diner • Through lounge • Mature garden • Off street parking • 0.5 miles from Elstree & Borehamwood train station & High Street • Exceptional potential to extend (stpp)

L&H residential
laminghope.com sales & lettings

L&H Residential are proud to present this charming detached bungalow situated in a sought-after location just 0.5 miles from Elstree & Borehamwood train station and High Street, this exceptional detached two-bedroom bungalow offers an excellent opportunity for a discerning buyer.

Upon entering the property, you are greeted by a spacious through lounge that leads to a well-appointed kitchen/diner. The property benefits from two generously sized bedrooms, providing comfortable living spaces. The mature garden offers a tranquil retreat, perfect for relaxation and entertaining.

The property also features off-street parking, enhancing convenience and accessibility for residents and visitors alike. Boasting exceptional potential to extend subject to the necessary planning permissions, this residence presents a rare opportunity for those looking to customise and elevate their living space.

In **L&H residential** potential, this property is ideal for those
laminghope.com sales & lettings

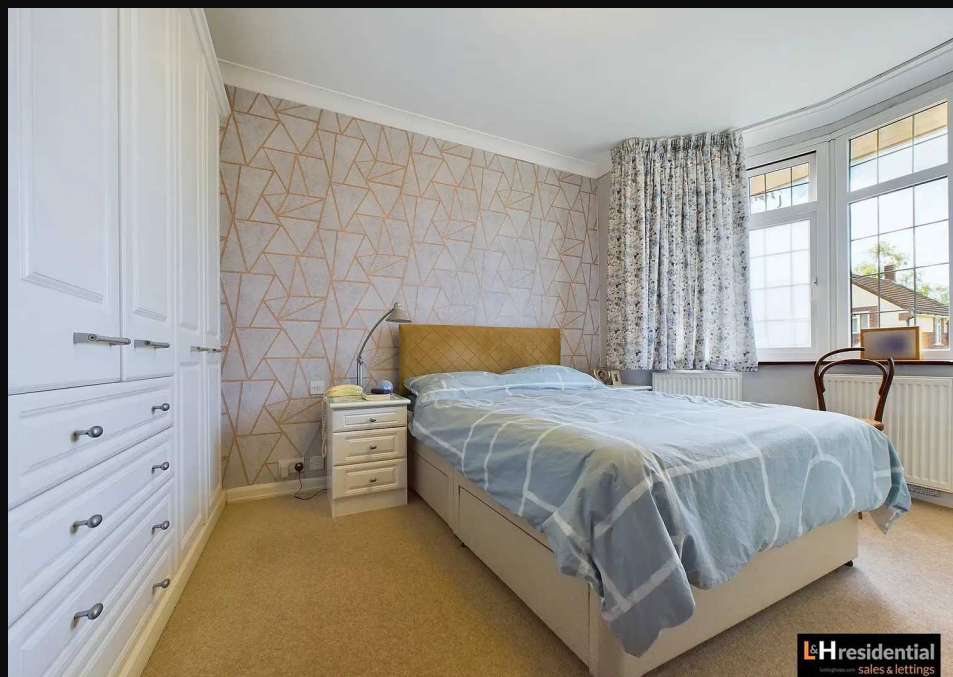


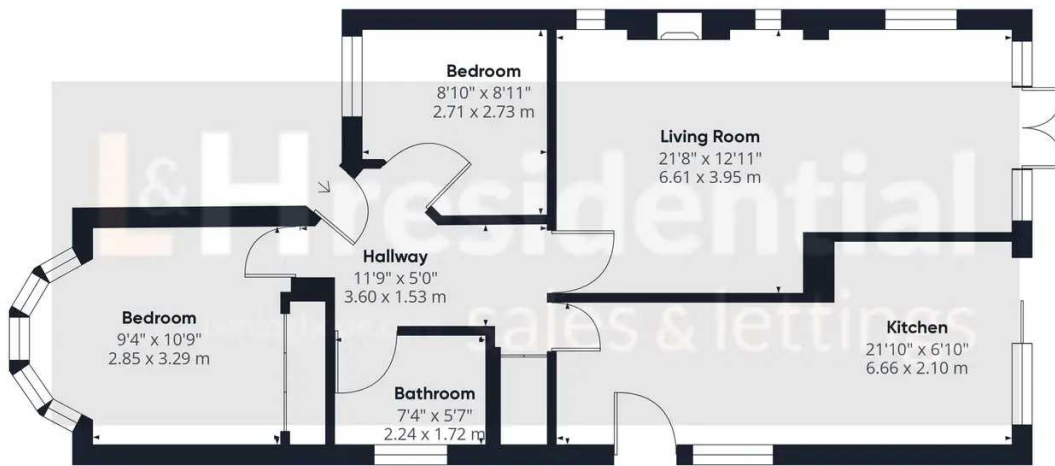
- Detached bungalow
- Two bedroom
- Kitchen/diner
- Through lounge
- Mature garden
- Off street parking
- 0.5 miles from Elstree & Borehamwood train station & High Street
- Exceptional potential to extend (stpp)

Scott Magor

e scott@laminghope.com

t +44 7572 958 043





Approximate total area⁽¹⁾
774.26 ft²
71.93 m²

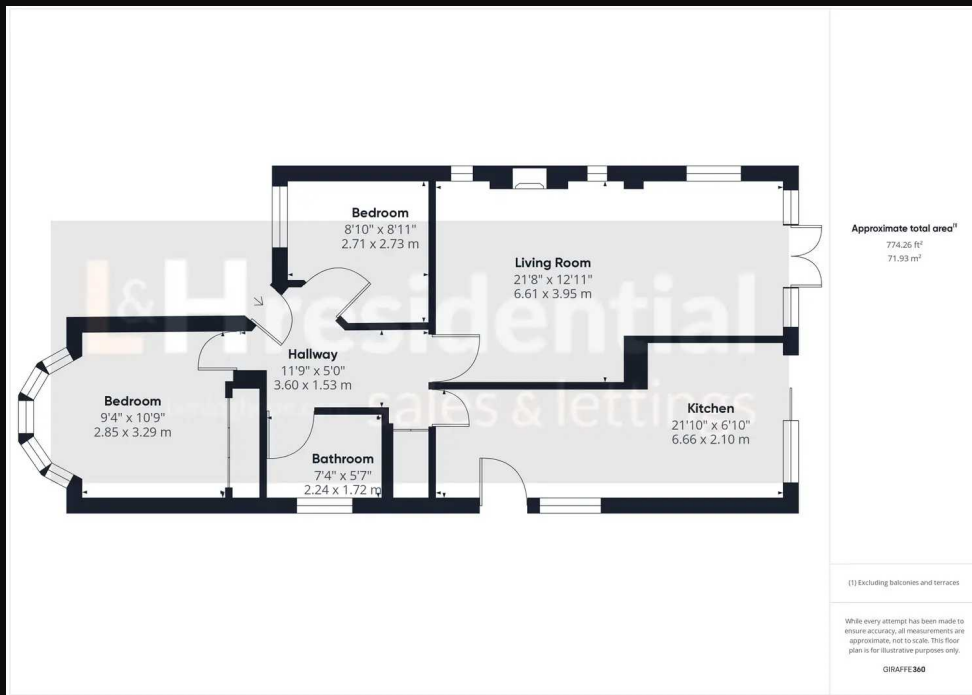
(1) Excluding balconies and terraces

While every attempt has been made to ensure accuracy, all measurements are approximate, not to scale. This floor plan is for illustrative purposes only.

GIRAFFE 360

You can include ar

L&H residential
laminghope.com sales & lettings



You can include e