



## Flat 5, Templeton Court Eaton Way, Borehamwood

£327,500 Leasehold

Beautifully presented and modern first floor flat • Two bedrooms & Two bathrooms (one ensuite) • Large open plan living space  
• Abundance of light • Allocated parking space • CHAIN FREE • Under a mile from Elstree & Borehamwood train station •  
Long lease • Short walk to local schools, shops, bus routes and parks

**L&H**residential  
laminghope.com sales & lettings

L&H Residential are proud to present this beautifully presented two-bedroom, two-bathroom first-floor flat offers modern living spaces flooded with natural light. The property boasts a large open plan living area, ideal for entertaining guests or relaxing in comfort. The main bedroom comes with an ensuite bathroom, adding a touch of luxury to every-day living. With an allocated parking space, convenience is key for residents.



**L&H residential**  
laminghope.com sales & lettings

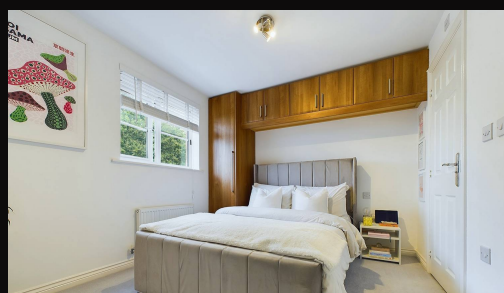


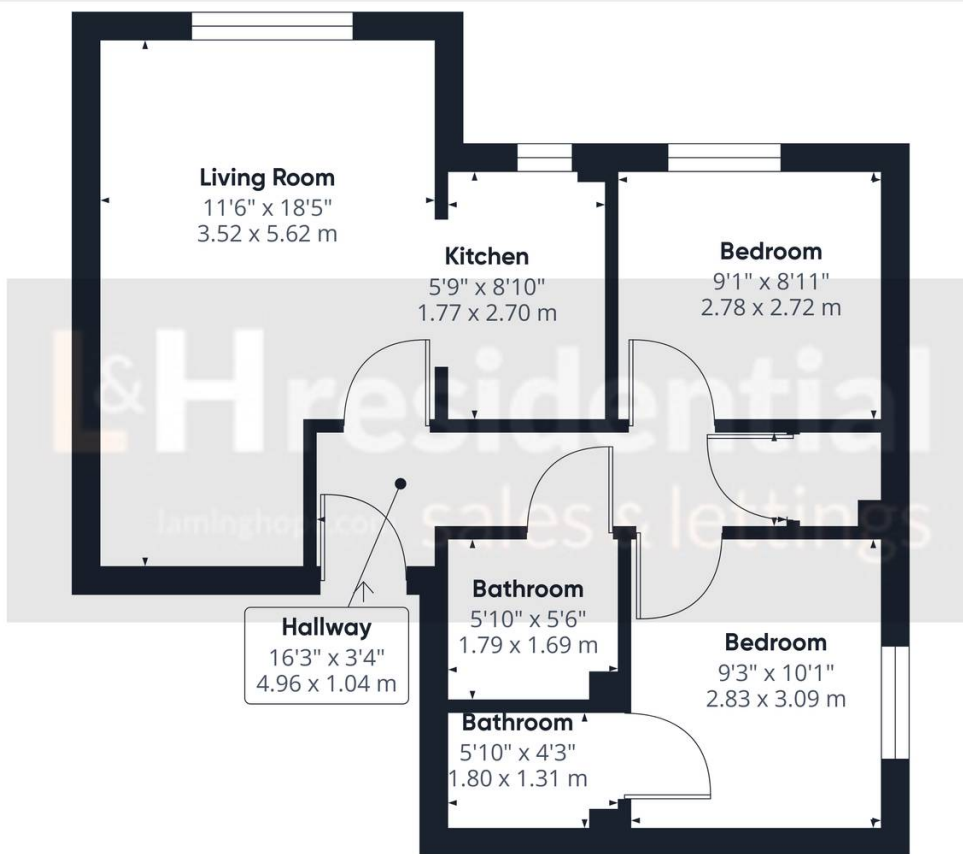
- Beautifully presented and modern first floor flat
- Two bedrooms & Two bathrooms (one ensuite)
- Large open plan living space
- Abundance of light
- Allocated parking space
- CHAIN FREE
- Under a mile from Elstree & Borehamwood train station
- Long lease
- Short walk to local schools, shops, bus routes and parks

Scott Magor

e scott@laminghope.com

t +44 7572 958 043





Approximate total area<sup>(1)</sup>  
544.87 ft<sup>2</sup>  
50.62 m<sup>2</sup>

(1) Excluding balconies and terraces

While every attempt has been made to ensure accuracy, all measurements are approximate, not to scale. This floor plan is for illustrative purposes only.

Calculations are based on RICS IPMS 3C standard.

GIRAFFE360