

Heaton House Thurston Way, Borehamwood

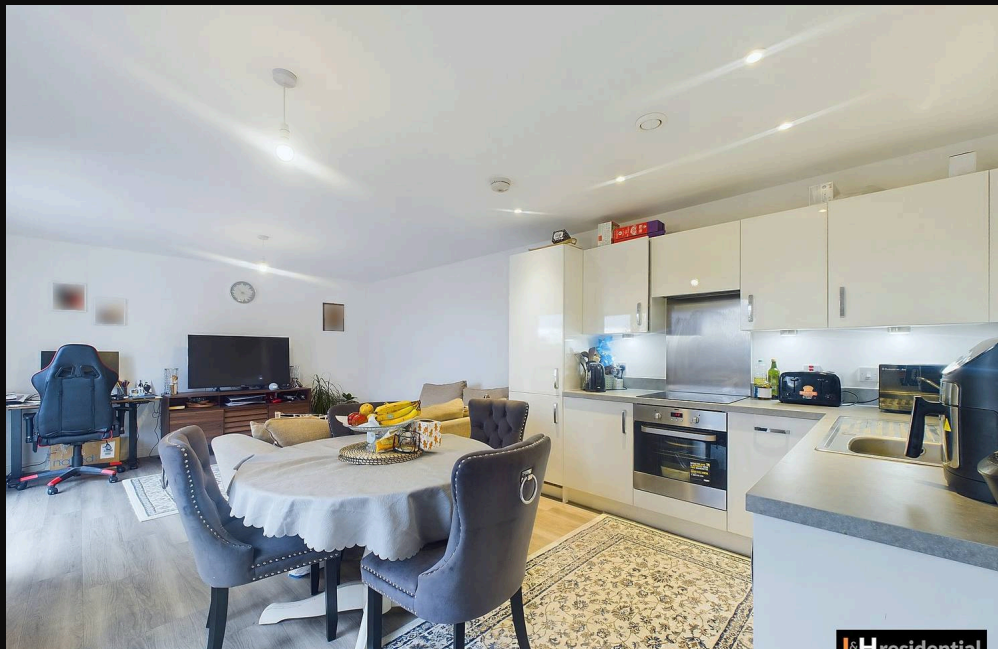
£280,000 Leasehold

Modern top floor flat • Hertsmere Mews Development • One large double bedroom • Open plan living • Long lease & Low service charges • Allocated parking space and ample visitor parking spaces • 0.7 miles from Elstree & Borehamwood train station

L&Hresidential
laminghope.com sales & lettings

L&H Residential are proud to present this excellent property situated in the prestigious Hertsmere Mews Development, this modern top floor flat offers a comfortable and convenient living space. Boasting one large double bedroom, residents will appreciate the spaciousness and tranquillity this home provides. The open plan living area is perfect for entertaining guests or enjoying quiet evenings in.

Benefiting from a long lease and low service charges, this property offers an affordable and hassle-free lifestyle. The convenience of an allocated parking space as well as ample visitor parking spaces ensures that parking is never a concern.

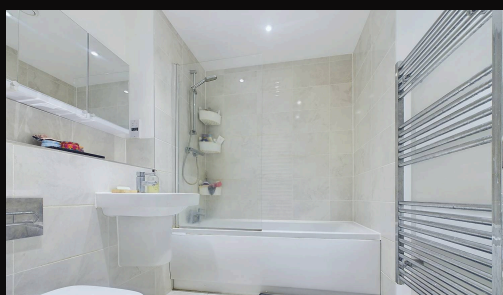
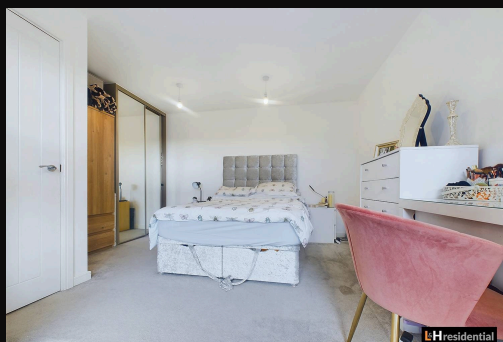


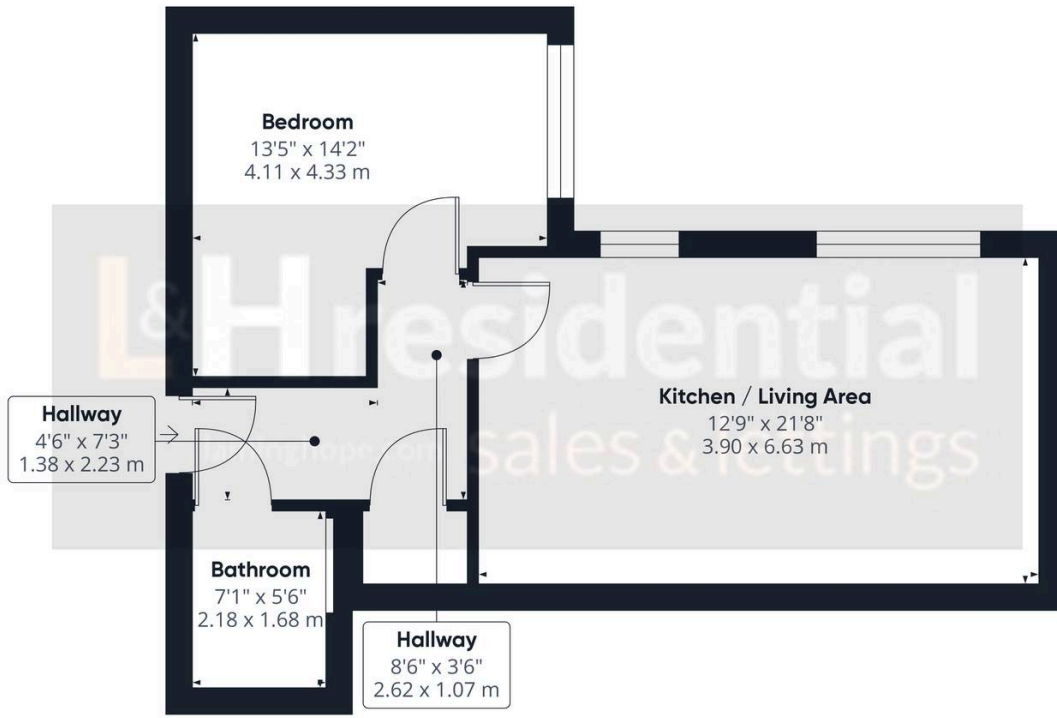
- Modern top floor flat
- Hertsmere Mews Development
- One large double bedroom
- Open plan living
- Long lease & Low service charges
- Allocated parking space and ample visitor parking spaces
- 0.7 miles from Elstree & Borehamwood train station

020 3617 1333

enquiries@laminghope.com

L&H residential
sales & lettings





Approximate total area⁽¹⁾
561.13 ft²
52.13 m²

(1) Excluding balconies and terraces

While every attempt has been made to ensure accuracy, all measurements are approximate, not to scale. This floor plan is for illustrative purposes only.

Calculations are based on RICS IPMS 3C standard.

GIRAFFE 360