



1 Armstrong Close, Borehamwood
£2,300 pcm

L&Hresidential
laminghope.com sales & lettings

Early February 2025

If you wish to rent the property then please email

scott@laminghope.com

We will need the following information in your application to rent the property.

How many people is the property for?

Full names of the persons to live in the property? What jobs do people do?

Salary?

When do you want to move?

Any other questions you have?

We look forward to hearing from you soon.



WHERE TO FIND US

Borehamwood Branch:

12 Shenley Road,
Borehamwood,
Hertfordshire,
WD6 1DL

Telephone: 020 3617 1333

Email: enquiries@laminghope.com

020 3617 1333

enquiries@laminghope.com

L&H residential
sales & lettings



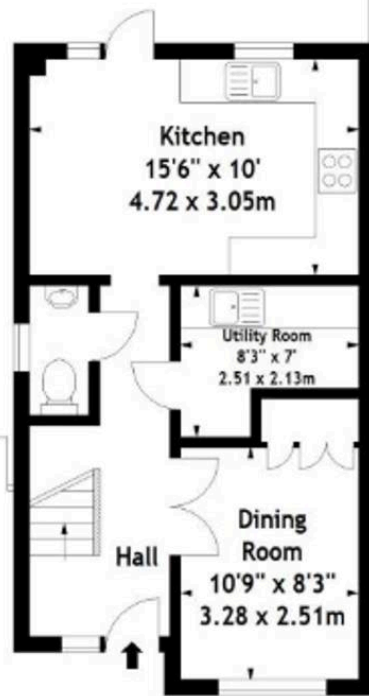
L&H residential
laminghope.com sales & lettings

Garden
43'6" x 19'6"
13.26 x 5.94m
(approximate)

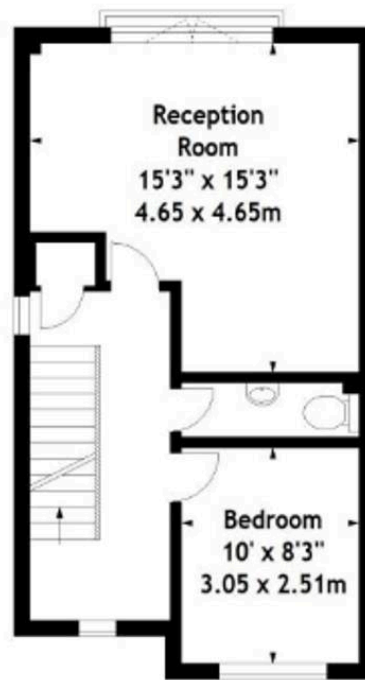
Armstrong Close, WD6
Approx. Gross Internal Area
1272 Sq Ft - 118.17 Sq M



Patio



Ground Floor



First Floor



Second Floor

Measured in accordance with RICS guidelines. Every attempt is made to ensure accuracy, however all measurements are approximate. This floor plan is for illustrative purposes only and is not to scale.
© Datography Ltd 2016
Photographs * Floorplans * Virtual Tours
Tel: 0845 643 4401 www.datography.com