

Gemini Park Manor Way, Borehamwood

£249,950 Leasehold

One large double bedroom • Open plan Kitchen/Living area • Allocated parking space • CHAIN FREE & EWS1 Certified • Long Lease • Communal garden • Fob entrance • 0.8 miles from Elstree & Borehamwood train station • Modern ground floor flat with Terrace (592sqft)

L&Hresidential
laminghope.com sales & lettings

L&H Residential are proud to be presenting this immaculate 1-bedroom flat situated on the ground floor of a modern building, constructed in 2015. The property boasts contemporary living with a spacious terrace offering a seamless extension of indoor/outdoor living space. Step inside to discover a generously sized double bedroom, complemented by an open-plan kitchen/living area, ideal for modern living.

The property benefits from an allocated parking space and is CHAIN FREE, offering a hassle-free purchase. Additionally, it is EWS1 certified, providing peace of mind to prospective buyers. With a long lease in place, this residence assures long-term security.



- One large double bedroom
- Open plan Kitchen/Living area
- Allocated parking space
- CHAIN FREE & EWS1 Certified
- Long Lease
- Communal garden
- Fob entrance
- 0.8 miles from Elstree & Borehamwood train station

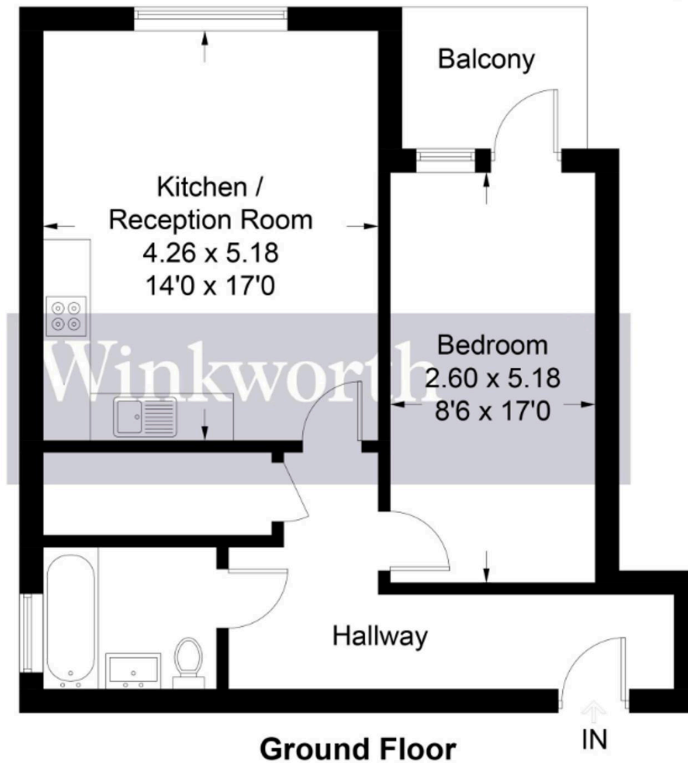
020 3617 1333

enquiries@laminghope.com

L&H residential
sales & lettings



Approximate Gross Internal Area = 55.0 sq m / 592 sq ft



Ground Floor

Illustration for identification purposes only, measurements are approximate, not to scale. Winkworth © 2024 (ID1098450)