

Gemini Park, Manor Way

£369,950 Leasehold

- Spacious top floor flat with lift
- Two very large double bedrooms
- Open plan kitchen/Living Area
- Gated development with allocated parking space
- Beautifully presented
- Large private terrace & Well maintained Communal gardens
- Lots of storage
- CHAIN FREE
- Long lease
- 0.8 miles From Elstree & Borehamwood Train Station

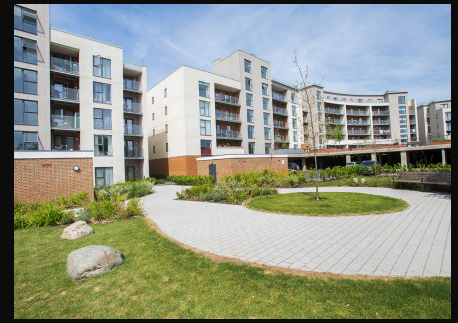
L&H residential
laminghope.com sales & lettings

L&H Residential are proud to present this stunning 2-bedroom apartment offers a luxurious living experience in a sought-after gated development. Situated on the top floor with a lift for convenience, this spacious flat boasts two very large double bedrooms, a modern open-plan kitchen/living area, and ample storage throughout. The property is beautifully presented and benefits from a large private terrace, perfect for enjoying outdoor gatherings, as well as access to the well-maintained communal gardens. With the added bonus of an allocated parking space and being offered chain-free, this property is ideal for those seeking a hassle-free move-in experience. Additionally, the long lease provides peace of mind for prospective buyers. Located just 0.8 miles from Elstree & Borehamwood Train Station, commuting is made easy, offering convenience for daily travel.

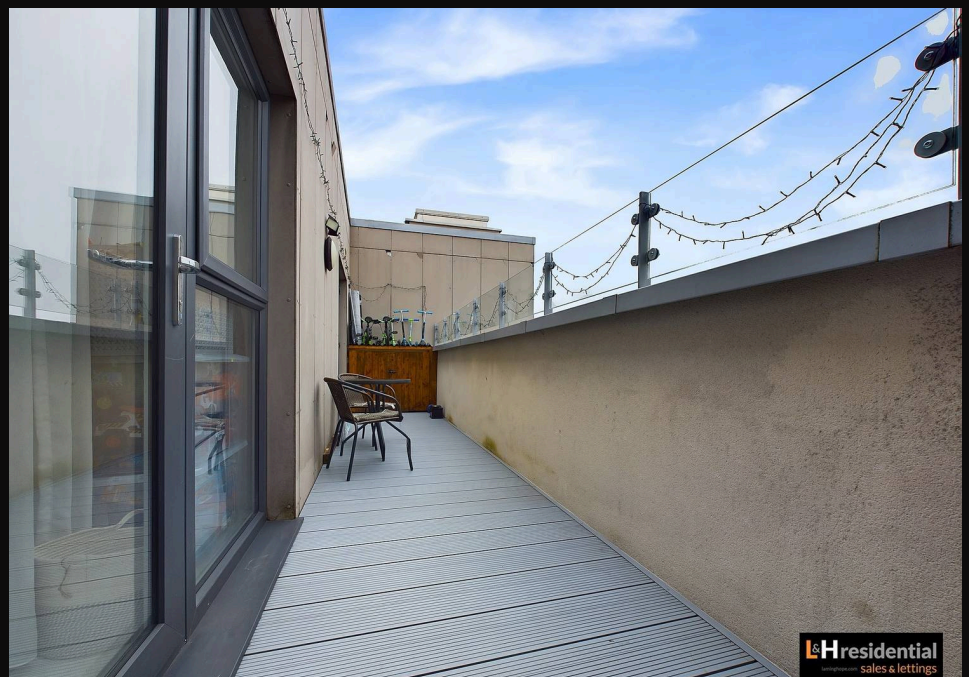
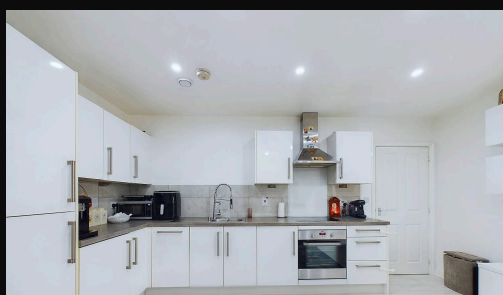
020 3617 1333

enquiries@laminghope.com

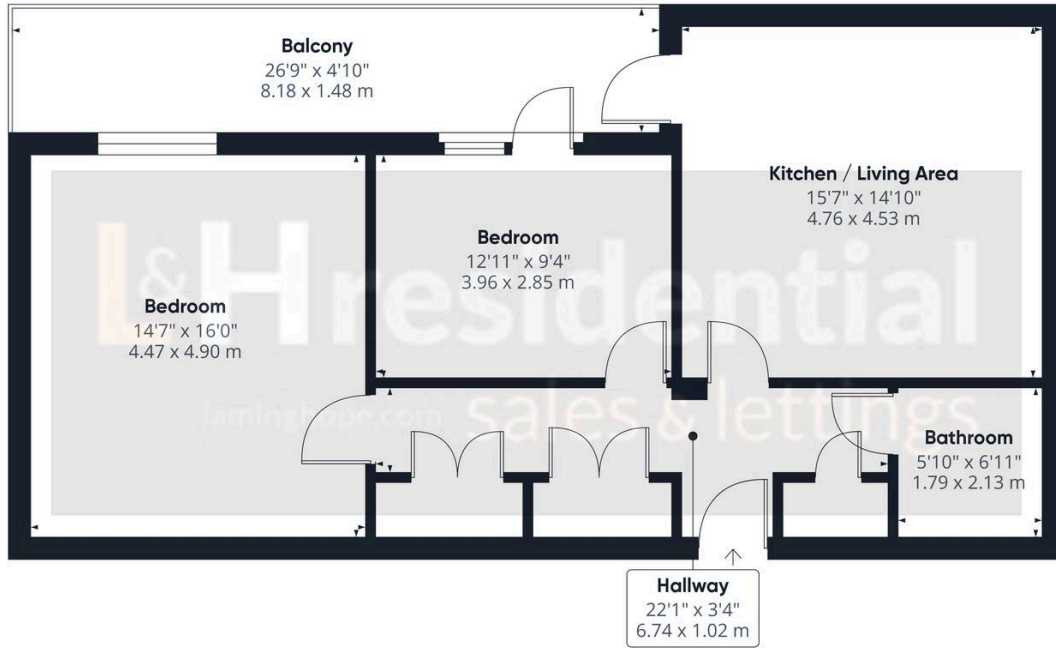
L&H residential
sales & lettings



- Spacious top floor flat with lift
- Two very large double bedrooms
- Open plan kitchen/Living Area
- Gated development with allocated parking space
- Beautifully presented
- Large private terrace & Well maintained Communal gardens
- Lots of storage
- CHAIN FREE
- Long lease
- 0.8 miles From Elstree & Borehamwood Train Station



L&H residential
sales & lettings



Approximate total area⁽¹⁾

773.93 ft²
71.9 m²

Balconies and terraces

130.14 ft²
12.09 m²

(1) Excluding balconies and terraces

While every attempt has been made to ensure accuracy, all measurements are approximate, not to scale. This floor plan is for illustrative purposes only.

Calculations are based on RICS IPMS 3C standard.

GIRAFFE 360