



Wordsworth Gardens, Borehamwood

£625,000 Freehold

Modern Terraced House • Three Bedrooms • Two Bathrooms & Downstairs Guest W.C. • Kitchen/Diner • Two Receptions • Private Garden & Off Street Parking • 0.4 Miles From Elstree & Borehamwood Train Station • South Side Of Borehamwood

L&Hresidential
laminghope.com sales & lettings

L&H Residential are proud to be presenting this fantastic property situated on the sought-after south side of Borehamwood, this modern terraced house boasts a generous and versatile layout ideal for contemporary family living. The property features three well-appointed bedrooms, two bathrooms, and a convenient downstairs guest W.C. The kitchen/diner provides a stylish space for both casual meals and formal dining, while two separate reception rooms offer ample space for relaxation and entertainment. Additionally, the property benefits from a private garden and off-street parking, ensuring comfort and convenience for residents.

Conveniently located just 0.4 miles from Elstree & Borehamwood Train Station, commuting is made easy for residents requiring access to London for work or leisure. With its well-connected position, residents can enjoy the perfect balance of suburban tranquillity and urban accessibility. This property presents a rare opportunity to acquire a contemporary home in a prime location within Borehamwood, offering a lifestyle of comfort and convenience for discerning buyers seeking a modern family residence.

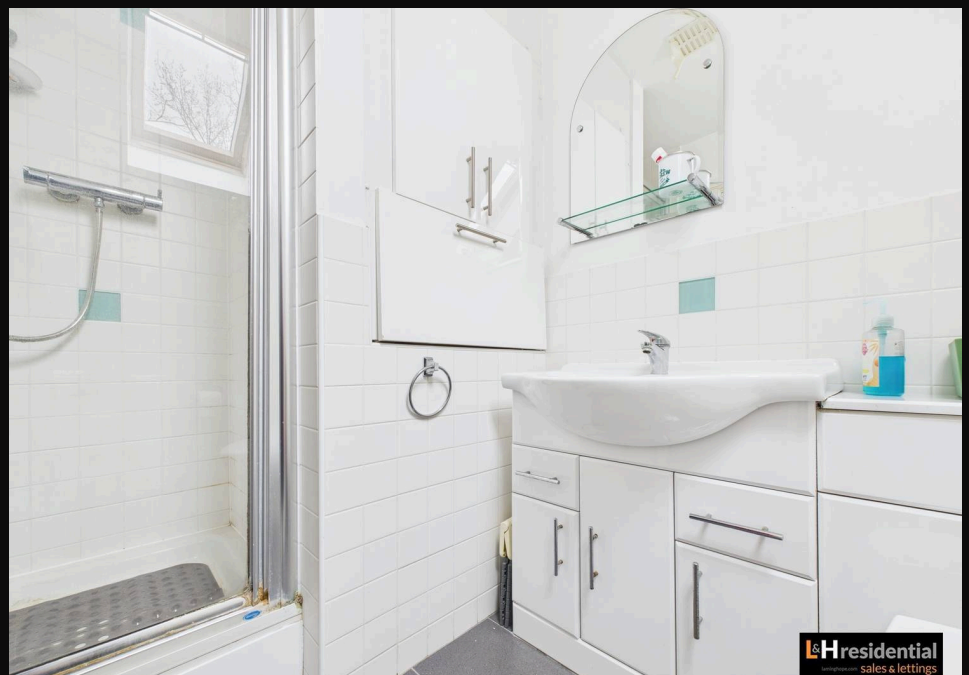
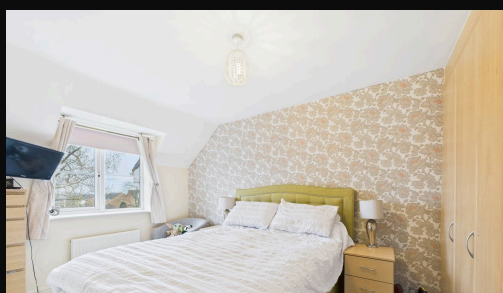


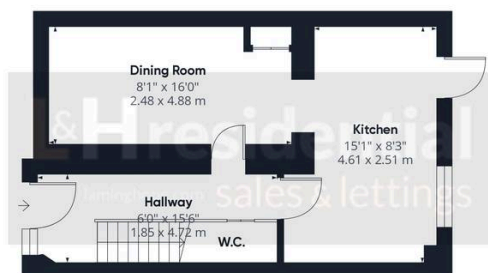
- Modern Terraced House
- Three Bedrooms
- Two Bathrooms & Downstairs Guest W.C.
- Kitchen/Diner
- Two Receptions
- Private Garden & Off Street Parking
- 0.4 Miles From Elstree & Borehamwood Train Station
- South Side Of Borehamwood

020 3617 1333

enquiries@laminghope.com

L&H residential
sales & lettings





Ground Floor



Floor 1



Floor 2

Approximate total area⁽¹⁾
1052.59 ft²
97.79 m²

(1) Excluding balconies and terraces

While every attempt has been made to ensure accuracy, all measurements are approximate, not to scale. This floor plan is for illustrative purposes only.

Calculations were based on RICS IPMS 3C standard. Please note that calculations were adjusted by a third party and therefore may not comply with RICS IPMS 3C.

GIRAFFE 360