



Stangate Crescent, BOREHAMWOOD

£460,000 Freehold

Beautifully presented end of terrace house • Three double bedrooms • Kitchen/Breakfast Room & Spacious lounge • Downstairs guest W.C. • Large private garden with side access • Short walk to local schools, shops and bus routes • CHAIN FREE

L&Hresidential
laminghope.com sales & lettings

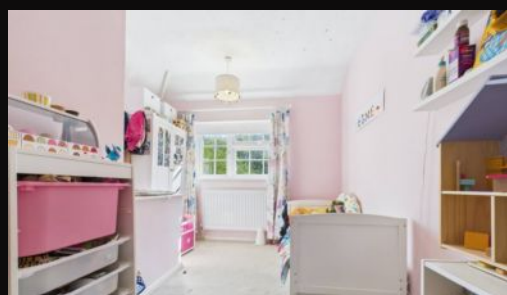
L&H Residential are proud to be presenting this charming and beautifully presented 3-bedroom end of terrace house, located in a prime residential area. This property offers a comfortable living environment with three spacious double bedrooms, ideal for a growing family or professionals seeking ample space.

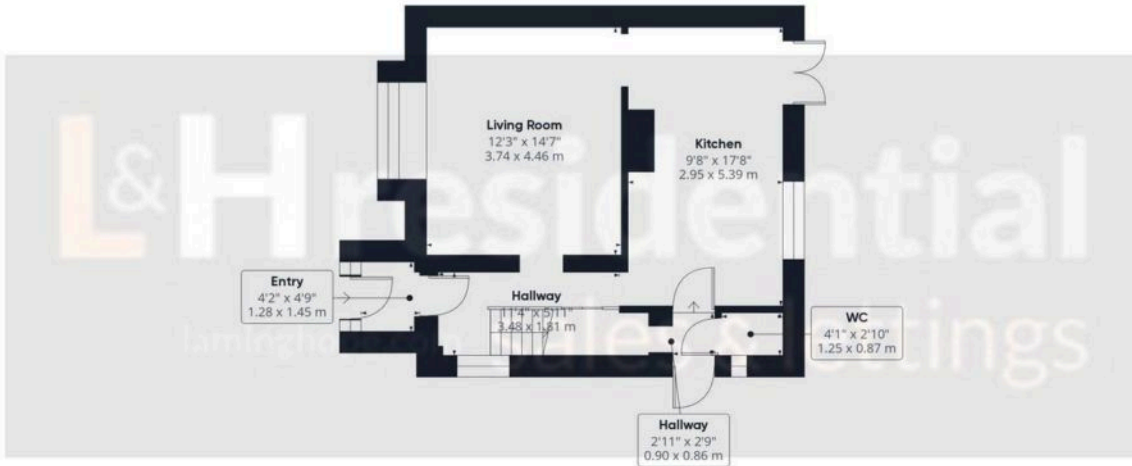
The property features a well-appointed kitchen/breakfast room, perfect for preparing meals and entertaining guests. The spacious lounge provides a relaxing atmosphere for unwinding after a long day. Additionally, there is a convenient downstairs guest W.C.

Benefiting from a large private garden with side access, this property allows for outdoor enjoyment and potential for gardening enthusiasts. Situated within a short walk to local schools, shops, and bus routes, residents will appreciate the convenience of nearby amenities.



- Beautifully presented end of terrace house
- Three double bedrooms
- Kitchen/Breakfast Room & Spacious lounge
- Downstairs guest W.C.
- Large private garden with side access
- Short walk to local schools, shops and bus routes
- CHAIN FREE





Ground Floor



Floor 1

Approximate total area⁽¹⁾
 921.72 ft²
 85.63 m²

(1) Excluding balconies and terraces

While every attempt has been made to ensure accuracy, all measurements are approximate, not to scale. This floor plan is for illustrative purposes only.

Calculations are based on RICS IPMS 3C standard.

GIRAFFE360