



Flat 11, Heaton House Thurston Way, Borehamwood

**L&H**residential  
laminghope.com sales & lettings





## Flat 11

Heaton House Thurston Way, Borehamwood

Modern 1-bed flat in Borehamwood with open-plan living, large balcony, allocated parking, and communal garden. Ideal for first-time buyers and investors. Close to train station.

Council Tax band: C

Tenure: Leasehold

- Recently built modern spacious first floor flat
- Long Lease & Low Service Charges
- Open plan Living & Large private balcony
- Large double bedroom
- Allocated parking space
- 0.7 miles from Elstree & Borehamwood train station



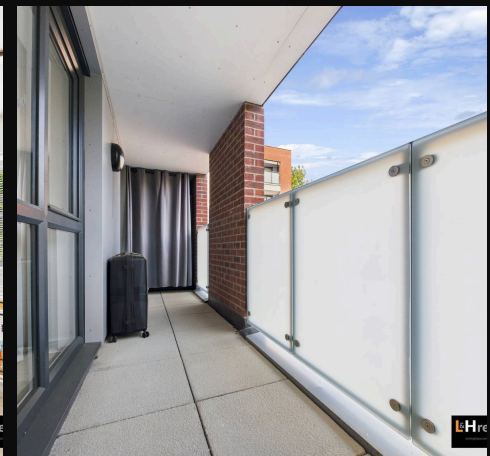
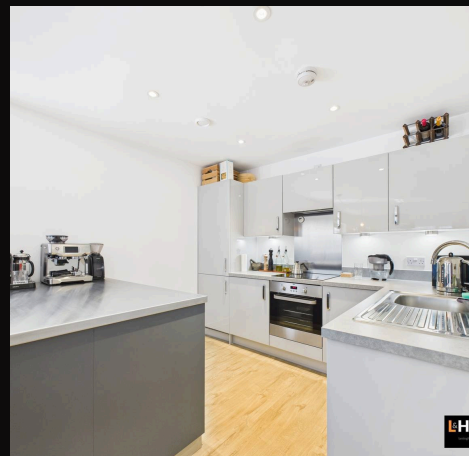
**L&Hresidential**  
laminghope.com sales & lettings

Borehamwood - 0203 617 1333

Scott Magor

e scott@laminghope.com

t +44 7572 958 043





You can include any text here. The text can be modified upon generating your brochure.

**L&H**residential  
laminghope.com sales & lettings

**Borehamwood** - 0203 617 1333

**Scott Magor**

e [scott@laminghope.com](mailto:scott@laminghope.com)

t +44 7572 958 043



**Kitchen / Living Area**

27'9" x 12'0"

8.47 x 3.68 m

**Balcony**

4'2" x 22'1"

1.27 x 6.75 m

**Bedroom**

16'4" x 8'10"

4.99 x 2.70 m

**Bathroom**

7'0" x 5'4"

2.15 x 1.65 m

**Hallway**

3'6" x 8'8"

1.07 x 2.64 m

**Hallway**

8'1" x 9'5"

2.47 x 2.87 m

**Approximate total area<sup>(1)</sup>**

613.75 ft<sup>2</sup>

57.02 m<sup>2</sup>

**Balconies and terraces**

89.66 ft<sup>2</sup>

8.33 m<sup>2</sup>



GIRAFFE360