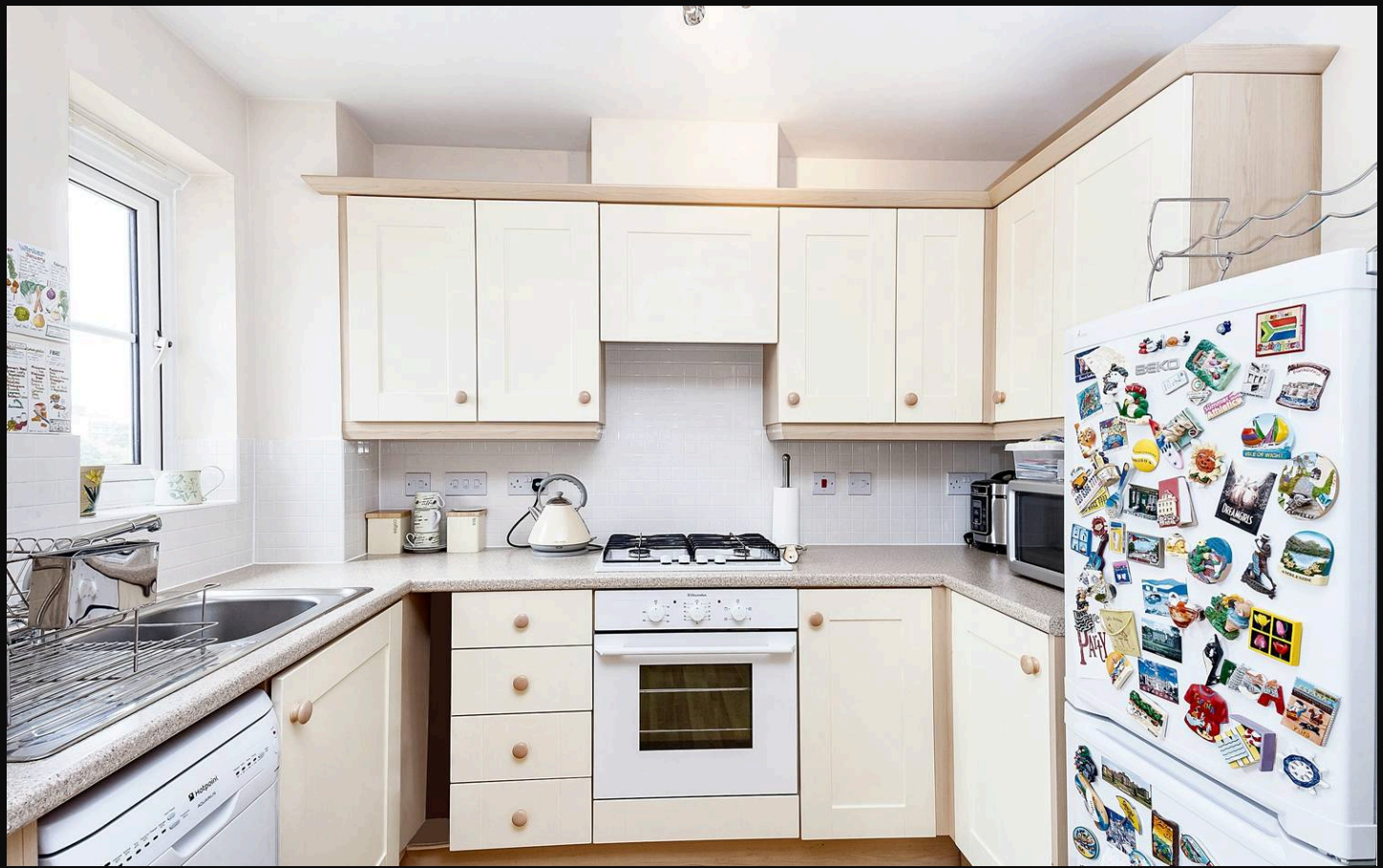




Flat 8, Templeton Court Eaton Way, Borehamwood
£1,600 pcm

L&Hresidential
laminghope.com sales & lettings



WHERE TO FIND US

Borehamwood Branch:

12 Shenley Road,
Borehamwood,
Hertfordshire,
WD6 1DL

Telephone: 020 3617 1333

Email: enquiries@laminghope.com

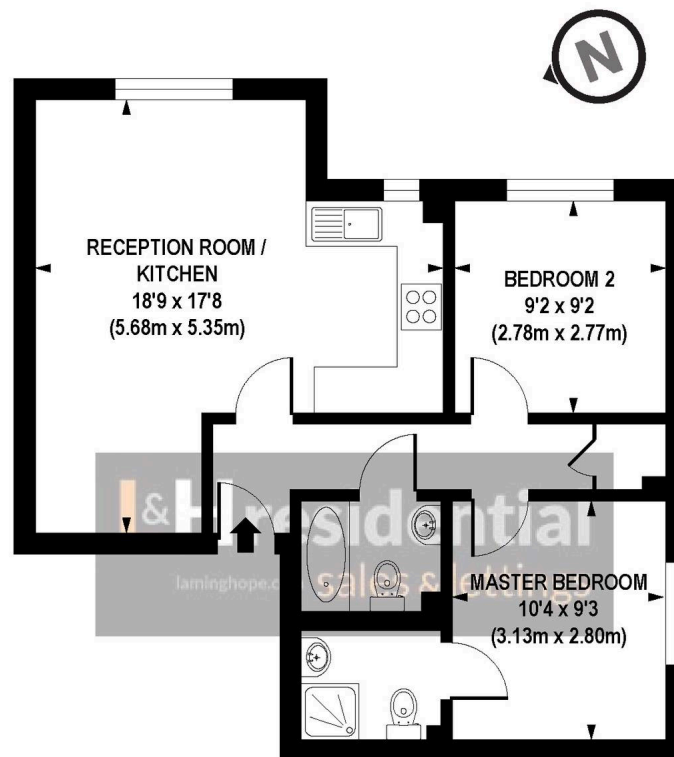
020 3617 1333

enquiries@laminghope.com

L&H residential
sales & lettings



L&H residential
laminghope.com sales & lettings



GROUND FLOOR

APPROX. GROSS INTERNAL FLOOR AREA 578 sq. ft / 53.68 sq. m

Floorplan is for illustrative purposes only and is not to scale.
Every attempt has been made to ensure the accuracy of the floorplan shown, however all measurements, fixtures, fittings and data shown are an approximate interpretation for illustrative purposes only.
Liability for errors, omissions or mis-statement through negligence or otherwise is hereby excluded.

CP CREATIVE
PROPERTY MARKETING