

Coleridge Way, Borehamwood

£560,000 Freehold

Beautifully presented terraced house • Three bedrooms • Large modern Kitchen/Breakfast Room • Downstairs guest W.C. • Two parking spaces • Private garden • Potential to extend (stpp) • Two minute walk to Elstree & Borehamwood train station

L&Hresidential
laminghope.com sales & lettings

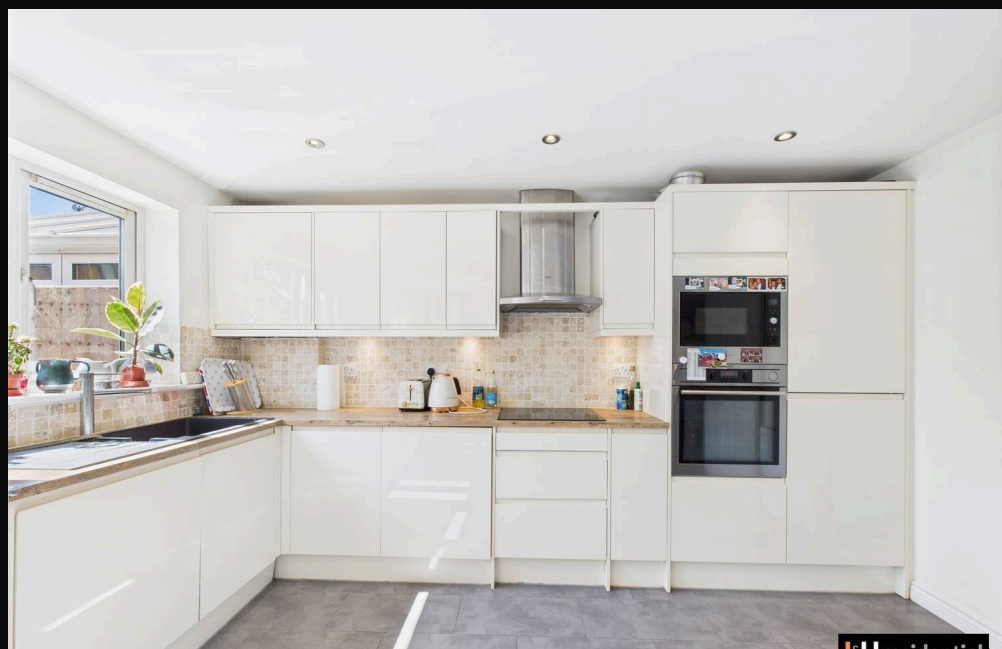
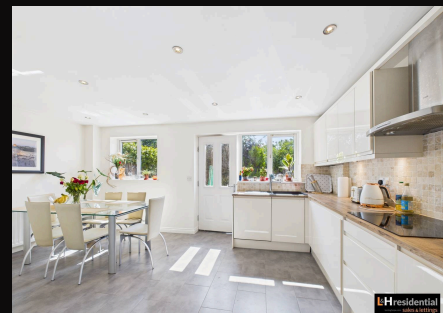
L&H Residential are proud to be presenting a striking terraced house boasting three well-appointed bedrooms, this immaculate property stands as a prime residential option in a desirable location. The interior showcases a thoughtfully designed large modern Kitchen/Breakfast Room, providing ample space for culinary pursuits and dining, complemented by a convenient downstairs guest W.C. for added functionality. The property offers two parking spaces for the residents' convenience, ensuring ease of access and transportation. Furthermore, the private garden offers an intimate outdoor space for relaxation and leisure.



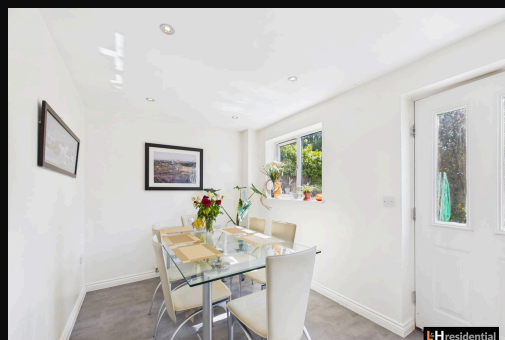
020 3617 1333

enquiries@laminghope.com

L&H residential
sales & lettings



- Beautifully presented terraced house
- Three bedrooms
- Large modern Kitchen/Breakfast Room
- Downstairs guest W.C.
- Two parking spaces
- Private garden
- Potential to extend (stpp)
- Two minute walk to Elstree & Borehamwood train station





Ground Floor



Floor 1

Approximate total area^m
840 ft²
77.9 m²

(1) Excluding balconies and terraces

Calculations reference the RICS IPMS 3C standard. Measurements are approximate and not to scale. This floor plan is intended for illustration only.

GIRAFFE360